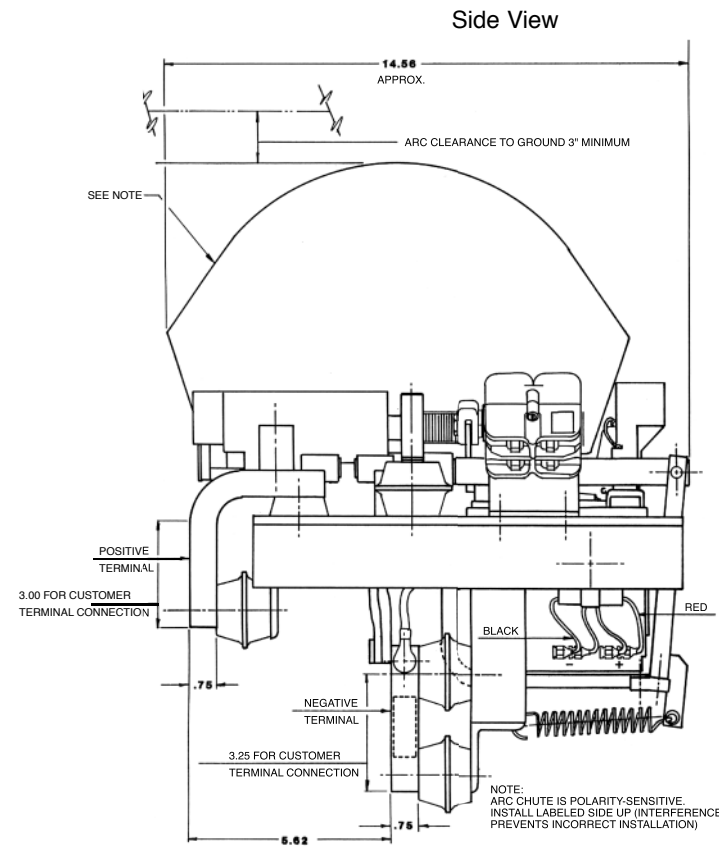
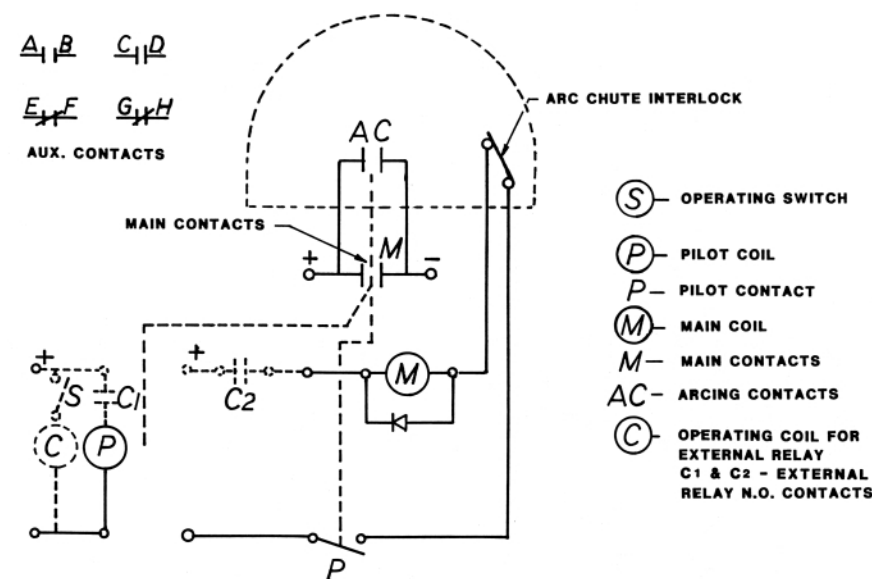


Outline Drawings

Special Purpose – Type 703



Schematic



All dimensions shown in inches. For reference purposes only. Not to be used for design or construction purposes.

Spec Tech Industrial 203 Vest Ave. Valley Park, MO 63088 Phone: 888 SPECTECH
 Email: sales@spectechind.com www.spectechind.com

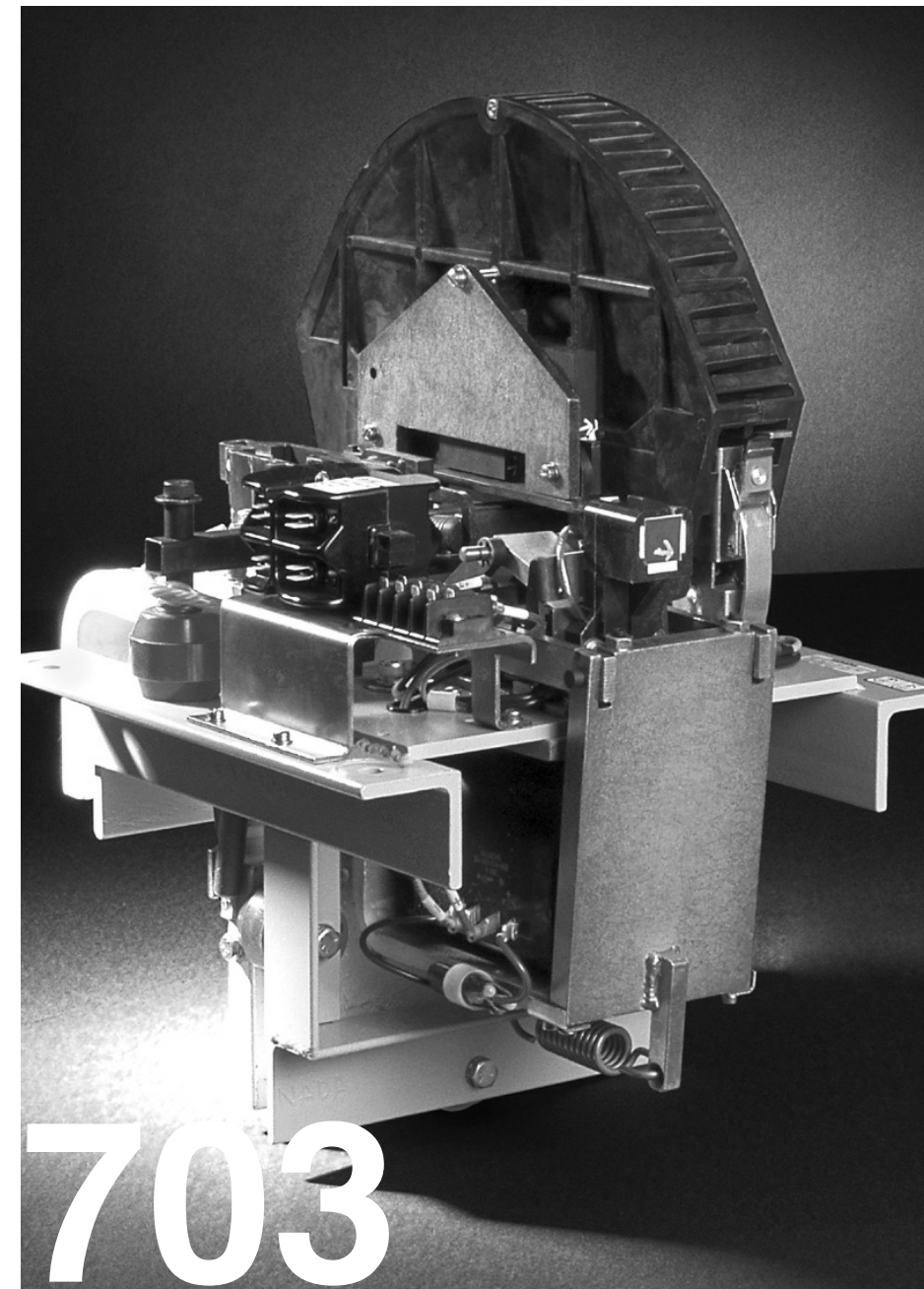
Hubbell Industrial Controls, Inc.

Type 703 5000 Ampere 1000 Volt DC Contactor

Catalog 42703 • September 2005

42703

Application/Model List



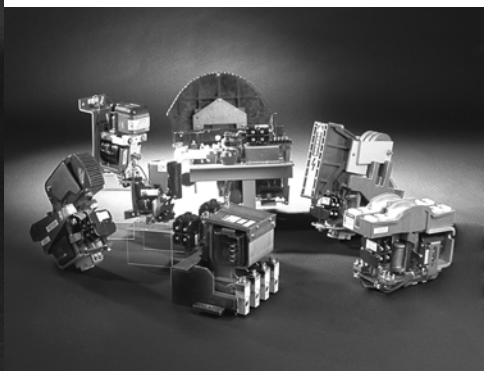
703

DC CONTACTOR

Highlights

- Multiple-path silver alloy main contacts
- Arc chute safety interlock
- Silver-plated current-carrying connections
- Dual coil operation
- High dielectric and mechanical strength
- Permanent magnet (polarized) arc chute

Ideal for use in systems requiring limited interrupting capacity, such as adjustable speed drives, transit and rail, gas and oil well drilling equipment, fuel cells, and crane controls. When used to replace a circuit breaker in a high-current DC application better suited to a contactor, the Type 703 is valued for its smaller size, lower cost, and longer life. This single pole, single throw normally open power contactor is rated at 5000 Ampere continuous duty at 1000 VDC in still air, with a maximum interrupting capacity of 4000 kW (within the limits of 5000 Ampere maximum and 1000 V maximum) and utilizing a polarized arc interruption system.



Amazingly Reliable – Hubbell Industrial Controls Devices

The Hubbell ICD family of rugged, high-performance DC devices are in great demand by industries needing reliable, solid state, adjustable controls. Products include contactors, limit switches, crane controls, fire pump controls, transfer switches, motor controllers and resistors. Hubbell ICD has a device ideal for a wide range of applications. And if it's from Hubbell, you know you're getting amazingly reliable technology.



hubbell industrial controls, inc.

Spec Tech Industrial 203 Vest Ave. Valley Park, MO 63088 Phone: 888 SPECTECH
 Email: sales@spectechind.com www.spectechind.com

Exceptionally high reliability, low contact resistance, and long contact life are a result of its multiple path main contacts of silver alloy and flexible leaf contact supports. Silver-plated terminals allow for excellent electrical connections and corrosion resistance. Non-current-carrying steel parts are zinc-dichromate plated or painted for corrosion resistance. Operating coils are of molded construction to protect against corrosion, foreign material and moisture contamination, and damage caused by physical abuse.

Given that its arc chute is polarized for arc interruption, external power connections must observe proper polarity, as marked on the power connection terminals, to provide proper arc interruption. The 74 VDC (for other control voltages, consult factory) dual coil operation consists of a main coil that is energized

only long enough to close the main and arcing contacts while the pilot coil seals the contactor and changes state on the auxiliary contacts.

All wear parts are front-accessible for ease of inspection, maintenance, and repair functions. A latch used to securely hold the arc chute in place is easily removed without tools, while its safety electrical interlock prevents contact closure if it not properly installed.

A provided 2NO&2NC auxiliary contact block utilizes dual bifurcated, chisel-point moveable (H-bridge design) contacts of fine silver to provide exceptionally high switching reliability and suitability for low power signals.

Product Listing

Part number is: 14-193-701-562

Specifications

Type 703

Main Contact Configuration

Single pole, normally open (SPNO)

Contactor Rating

Continuous Open Air Rating at 80C ambient = 5000 Amps

Maximum Make Current = 12,000 Amps

Maximum Interrupting Capacity = 4000 kW

(Within the limits of 5000 Amps and 1000 VDC)

Maximum Thru-Current Capability = 30,000 Amps

Auxiliary Contact Configuration

2NO&2NC

Auxiliary Contact Rating (Resistive Load)

125 VDC or less = 10 Amps

250 VDC = 2.5 Amps

Auxiliary Contact Connections

Two ¼ in. (6.35 mm) faston tabs per terminal

Mounting

Mounts on two 2in. (50.8 mm) x 2in. (50.8 mm) angle supports with three ¾ in. (M8) screws

Arc Chute Electrical Clearance

3 in. (76.2 mm) minimum to any conductive surface

Power Connections

Eight ¾ in. – 16 tapped holes per terminal

Coil Connections

Two ¼ in. (6.35 mm) faston tabs per terminal

Weight

90 lbs. (40 kg)

Overall Dimensions

12.8 in. (325 mm) high x 14.6 in. (371 mm) wide x 18.0 in. (457 mm) deep+

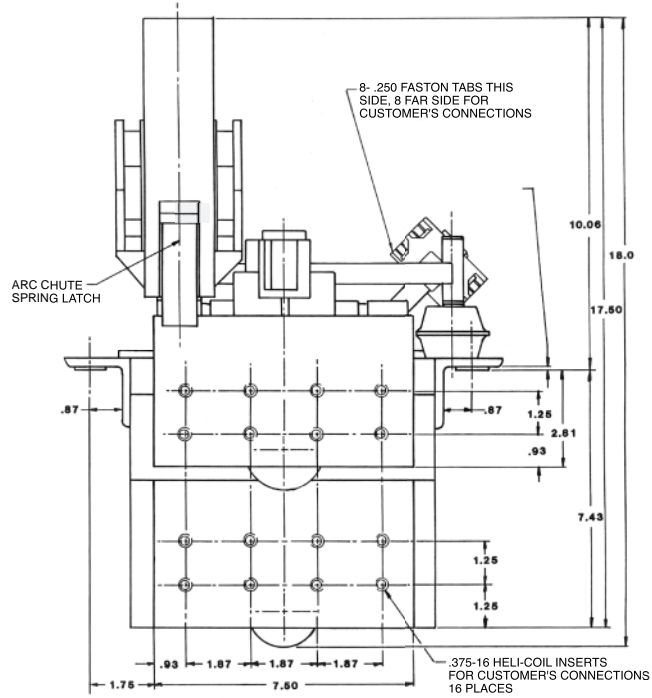
3 in. (76.2 mm) for electrical clearance. Note: From mounting support,

8 in. (203 mm) to rear and 10 in. (254 mm) to front

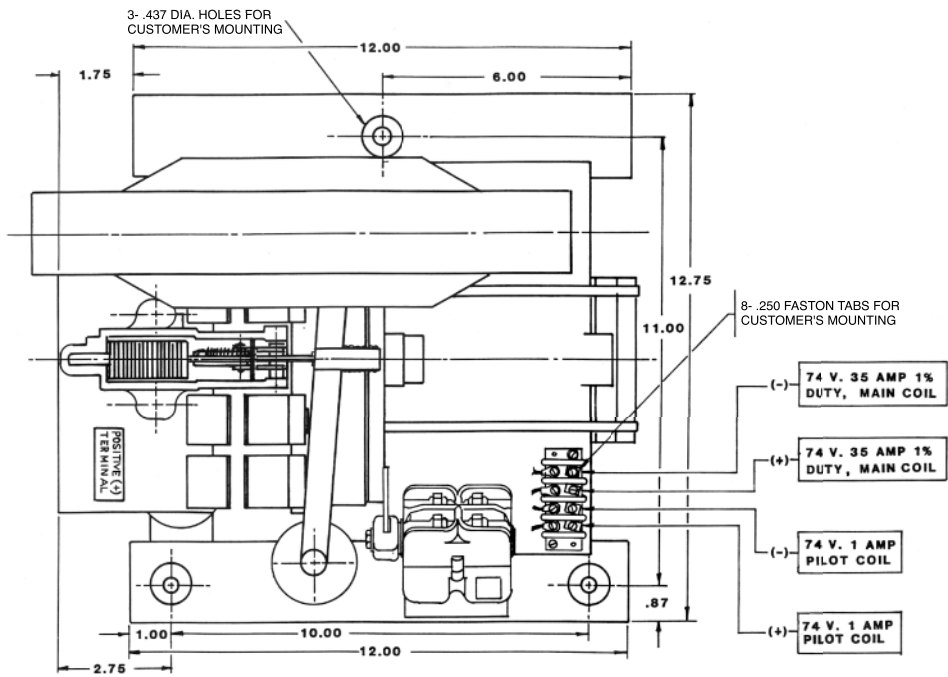
Outline Drawings

Special Purpose – Type 703

Back View



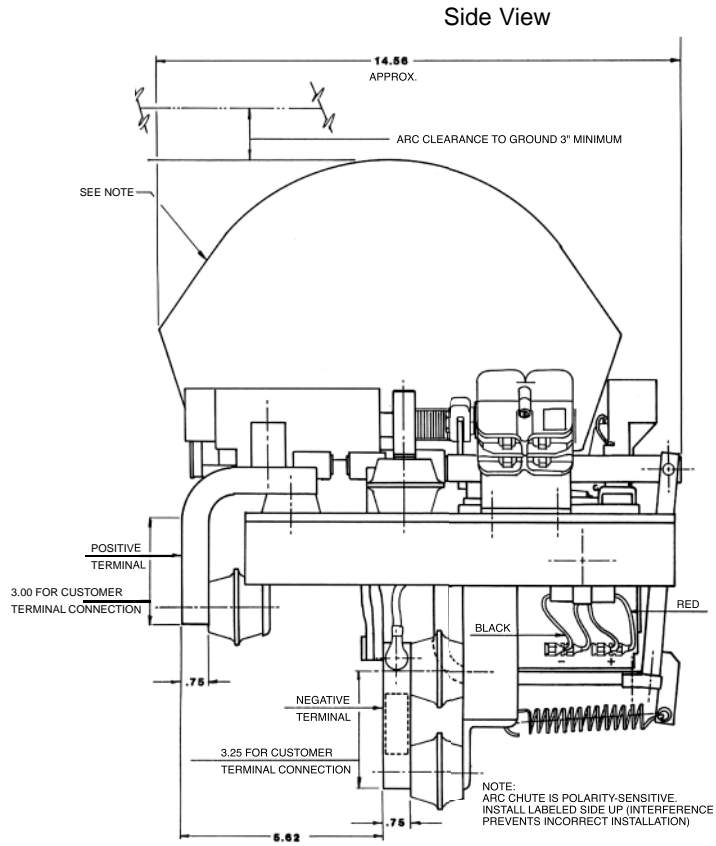
Top View



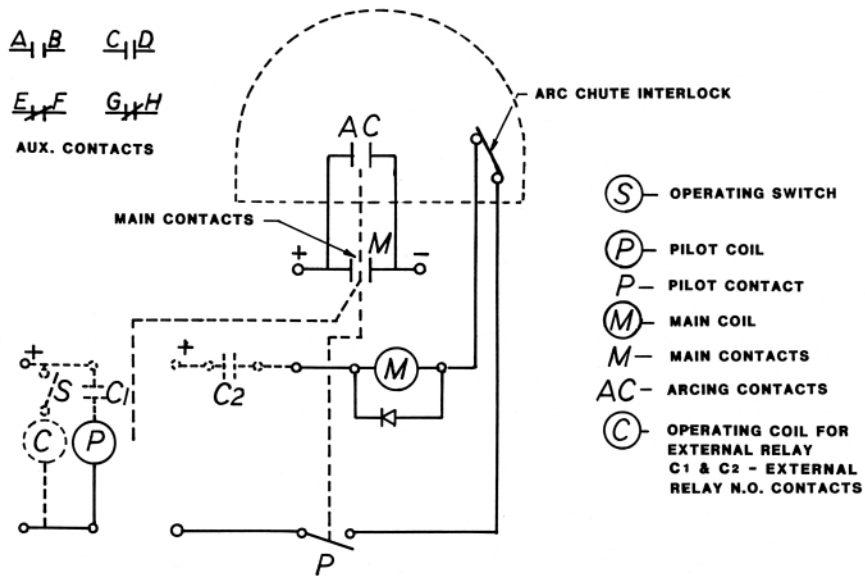
All dimensions shown in inches. For reference purposes only. Not to be used for design or construction purposes.

Outline Drawings

Special Purpose – Type 703



Schematic



All dimensions shown in inches. For reference purposes only. Not to be used for design or construction purposes.



Hubbell Industrial Controls, Inc.

A subsidiary of Hubbell Incorporated
 4301 Cheyenne Dr., Archdale, NC 27262
 Telephone (336) 434-2800 • Fax (336) 434-2803
<http://www.hubbell-icd.com>
Sales@hubbell-icd.com