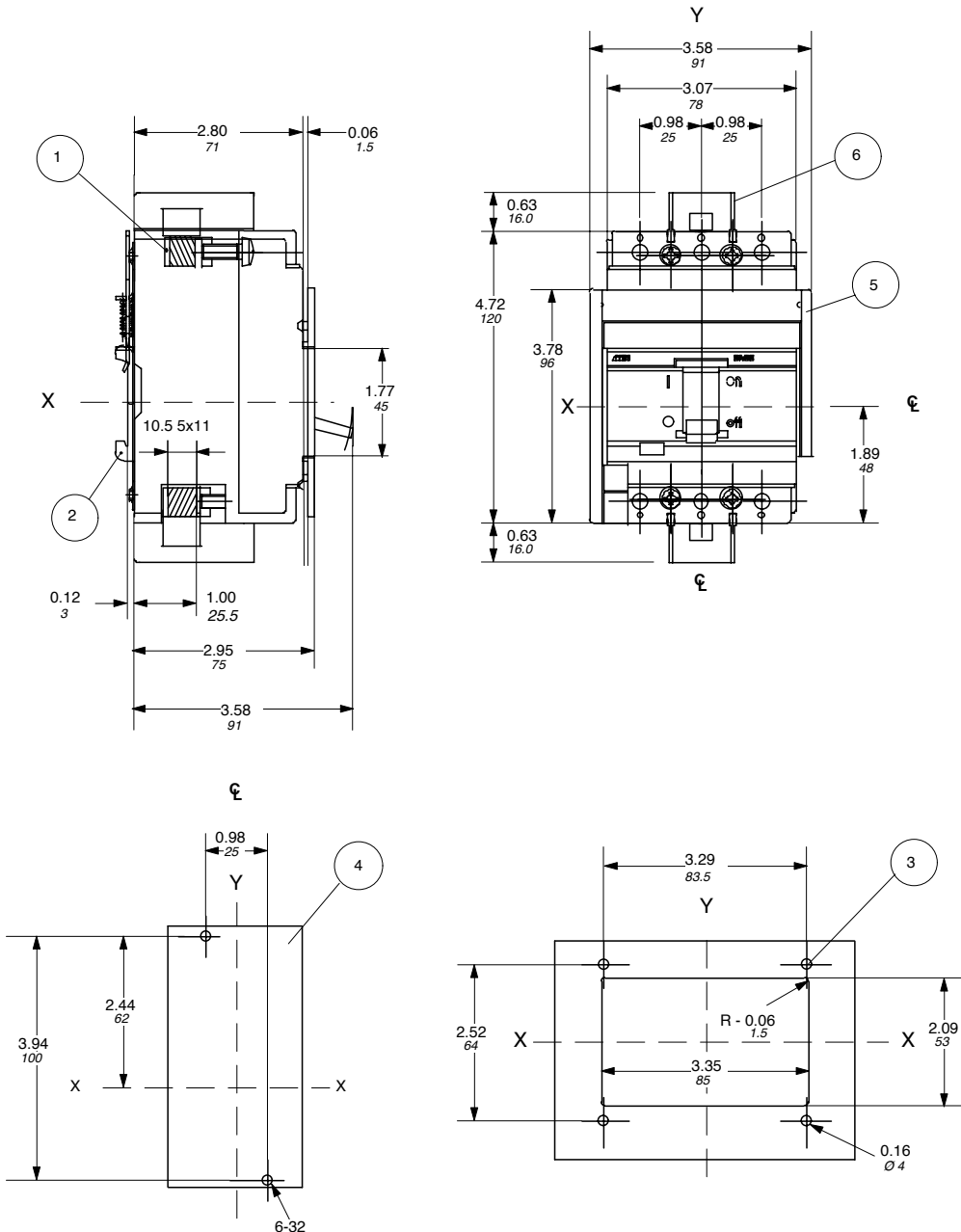


Approximate dimensions S1 Fixed version, front

Isomax
MCCBs

00.00 Inches
00.00 [Millimeters]



LEGEND

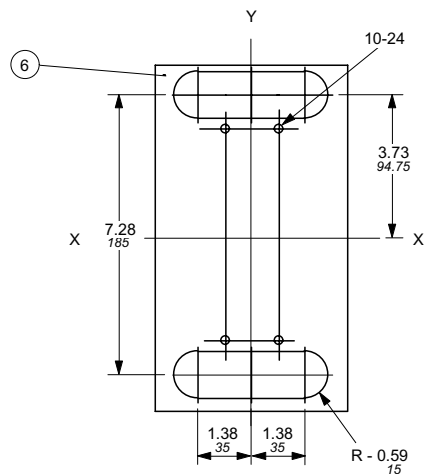
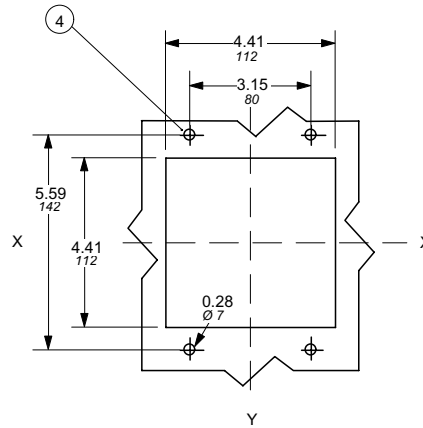
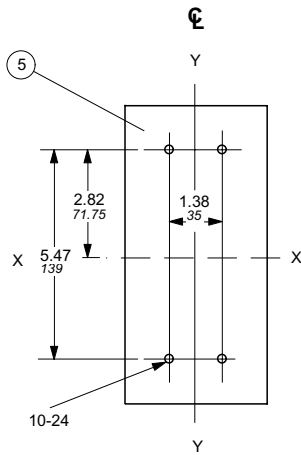
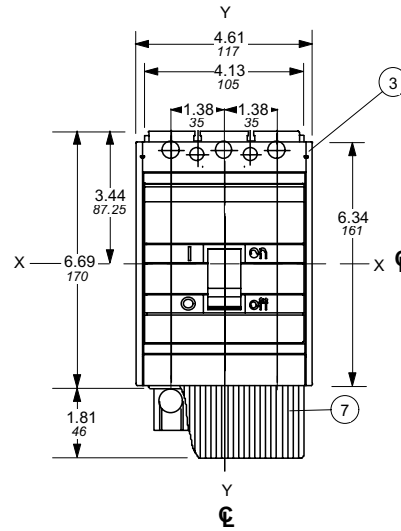
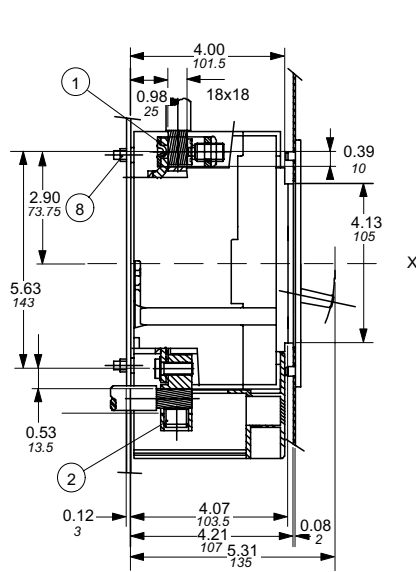
- 1-FRONT TERMINALS FOR CABLE OR FOR FLAT BAR
- 2-MOUNTING ON CHANNEL TO DIN EN 50022 (OPTIONAL)
- 3-COMPARTMENT DOOR SHEET STEEL DRILLING FOR FIXING THE FLANGE
- 4-MOUNTING ON SHEET STEEL
- 5-FLANGE FOR THE COMPARTMENT DOOR
- 6-INSULATING BARRIER

WIRE RANGE	WIRE TORQUE
14 AWG - 8 AWG	22 lb-in
6 AWG - 3 AWG	44 lb-in

COPPER WIRE ONLY

Approximate dimensions S3 Fixed version, front

00.00 — Inches
00.00 — [Millimeters]



LEGEND

- 1-FRONT TERMINALS FOR CABLE CONNECTION
- 2-REAR TERMINALS FOR CABLE CONNECTION
- 3-FLANGE FOR THE COMPARTMENT DOOR
- 4-COMPARTMENT DOOR SHEET STEEL DRILLING FOR FIXING THE FLANGE
- 5-MOUNTING ON SHEET STEEL
- 6-MOUNTING ON SHEET STEEL WITH REAR CABLE TERMINALS
- 7-HIGH TERMINAL COVERS WITH IP 20 PROTECTION DEGREE
- 8-TIGHTENING TORQUE 17.70 lb-in

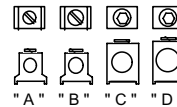


FIGURE	LUG KIT CAT. NO.	LUG NO.	TEMP.	WIRE RANGE	WIRE TORQUE	MOUNTING TORQUE	WIRE SCREW SIZE
A	K3TA, K3TA-2	D3477	75° C	14AWG - 2AWG	50 lb-in	120 lb-in	SLOT
B	K4TB, K4TB-2	D3447	75° C	14AWG - 1/0	50 lb-in	120 lb-in	SLOT
C	K4TC, K4TC-2	D3449	75° C	2AWG - 4/0	120 lb-in	150 lb-in	3/16
D	K4TD, K4TD-2	D3448	75° C	4AWG - 300kcmil	275 lb-in	150 lb-in	1/4

Approximate dimensions S4 Fixed version, front

Isomax
MCCBs

00.00 Inches
00.00 [Millimeters]

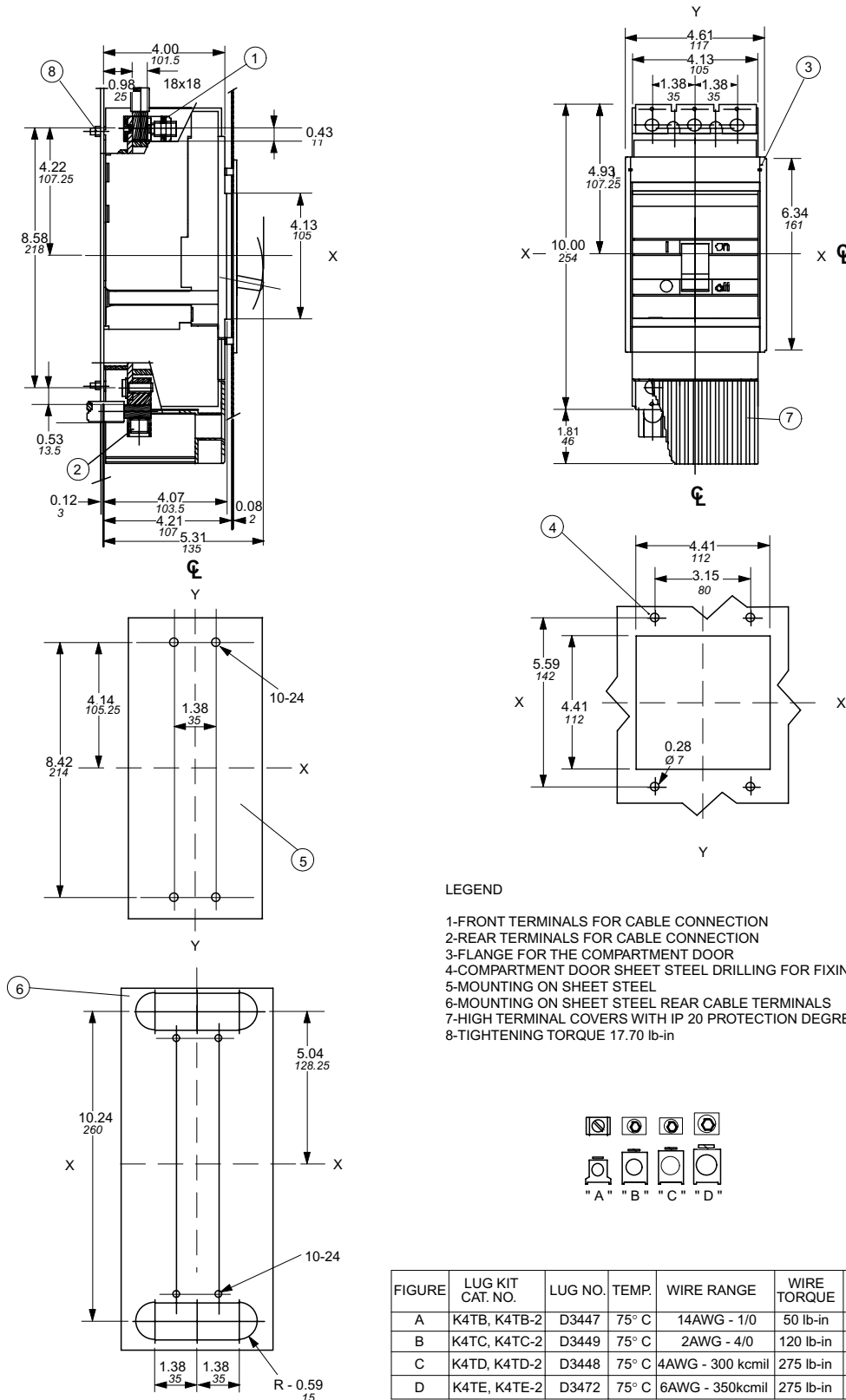
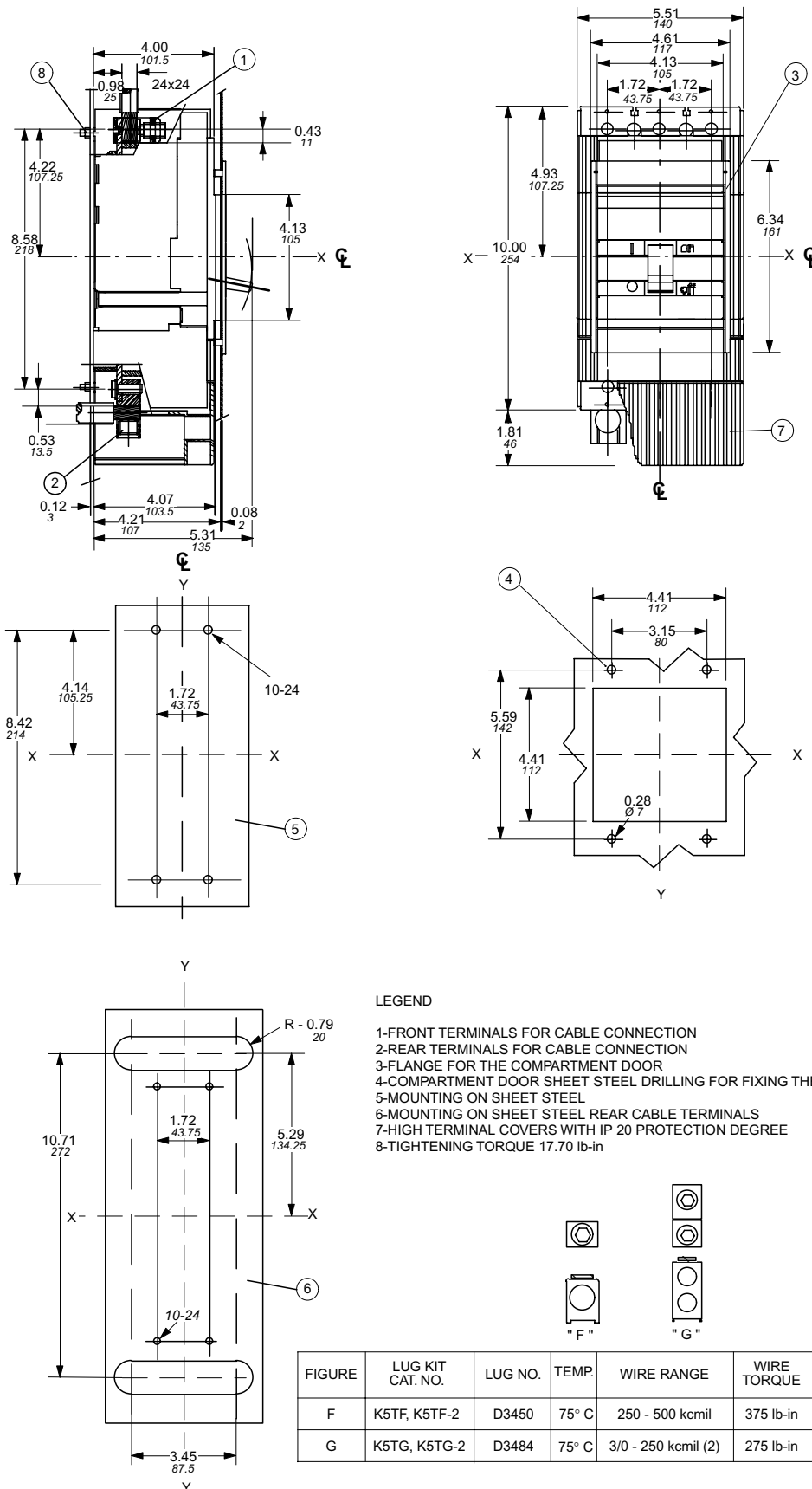


FIGURE	LUG KIT CAT. NO.	LUG NO.	TEMP.	WIRE RANGE	WIRE TORQUE	MOUNTING TORQUE	WIRE SCREW SIZE
A	K4TB, K4TB-2	D3447	75° C	14AWG - 1/0	50 lb-in	120 lb-in	SLOT
B	K4TC, K4TC-2	D3449	75° C	2AWG - 4/0	120 lb-in	150 lb-in	3/16
C	K4TD, K4TD-2	D3448	75° C	4AWG - 300 kcmil	275 lb-in	150 lb-in	1/4
D	K4TE, K4TE-2	D3472	75° C	6AWG - 350kcmil	275 lb-in	150 lb-in	5/16

Approximate dimensions S5 Fixed version, front

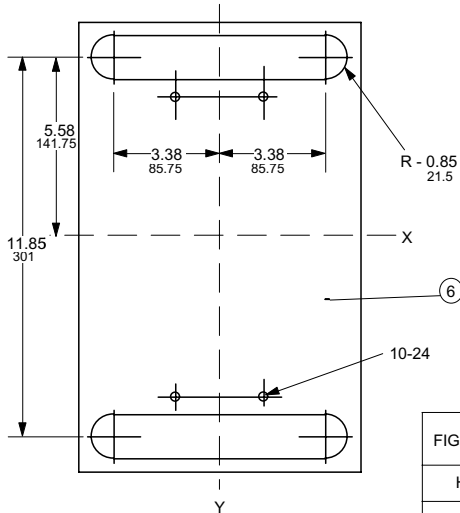
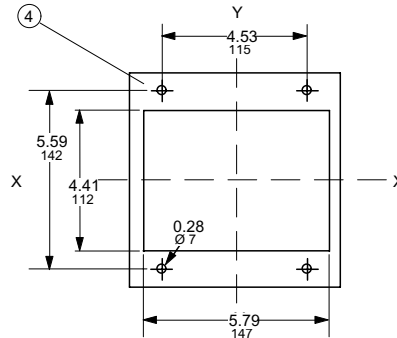
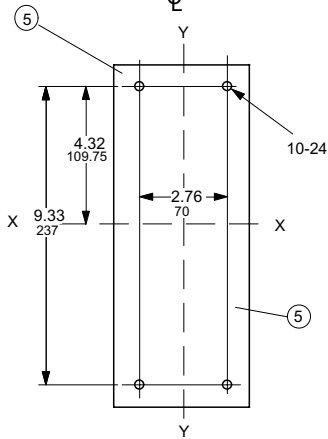
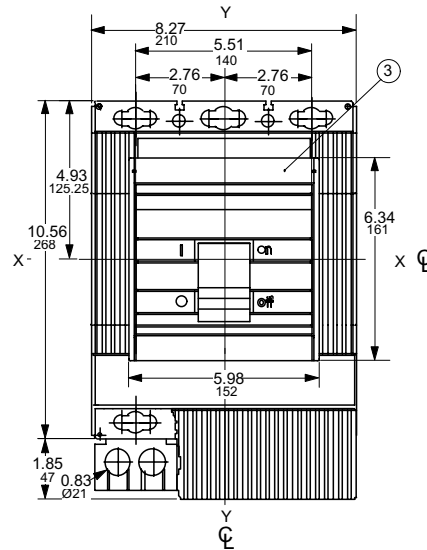
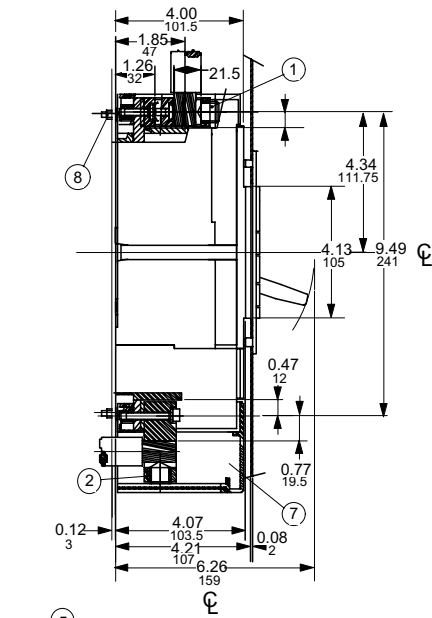
00.00 — Inches
00.00 — [Millimeters]



Approximate dimensions S6 Fixed version, front

Isomax
MCCBs

00.00 Inches
00.00 [Millimeters]



LEGEND

- 1-FRONT TERMINALS FOR CABLE PROTECTION
- 2-REAR TERMINALS FOR CABLE CONNECTION
- 3-FLANGE FOR THE COMPARTMENT DOOR
- 4-COMPARTMENT DOOR SHEET STEEL DRILLING TEMPLATE
- 5-MOUNTING ON SHEET STEEL
- 6-MOUNTING ON SHEET STEEL REAR CABLE TERMINALS
- 7-HIGH TERMINAL COVERS WITH IP 20 PROTECTION DEGREE
- 8-TIGHTENING TORQUE 17.70 lb-in

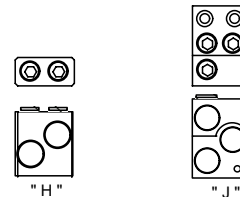
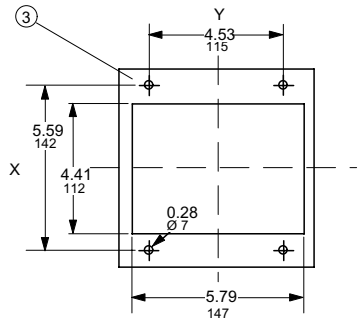
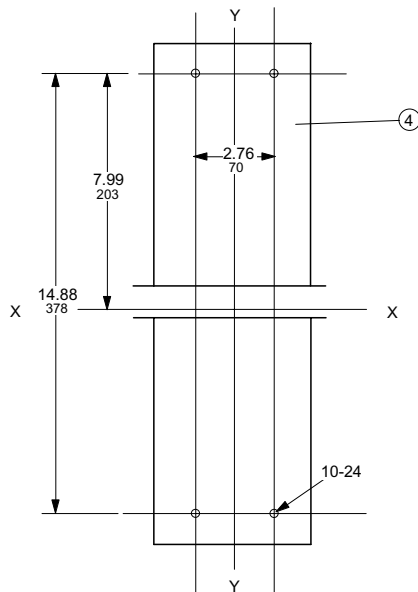
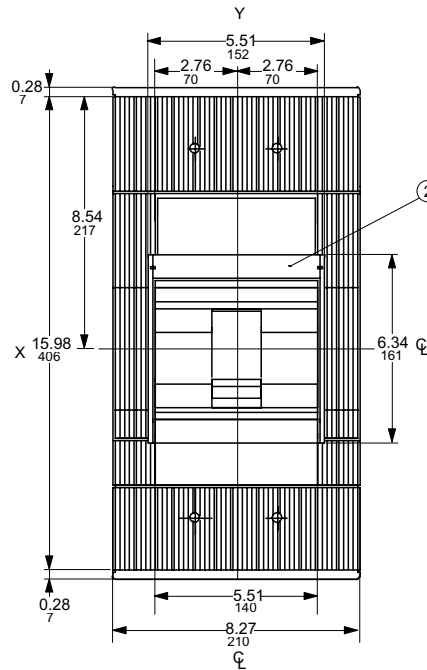
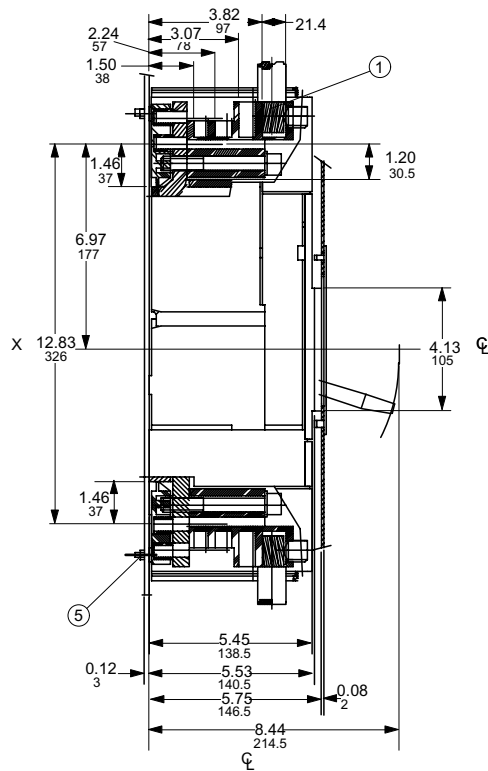


FIGURE	LUG KIT CAT. NO.	LUG NO.	TEMP.	WIRE RANGE	WIRE TORQUE	MOUNTING TORQUE	WIRE SCREW SIZE
H	K6TH, K6TH-2	D2957	90° C	250 - 500 kcmil (2)	275 lb-in	85 lb-in	5/16
J	K6TJ, K6TJ-2	D2958	90° C	2/0 - 400 kcmil (3)	375 lb-in	110 lb-in	3/8

Approximate dimensions S7 Fixed version, front

00.00 → Inches
00.00 → [Millimeters]



LEGEND

- 1-FRONT TERMINALS FOR CABLE CONNECTION
- 2-FLANGE FOR THE COMPARTMENT DOOR
- 3-COMPARTMENT DOOR SHEET STEEL DRILLING TEMPLATE
- 4-MOUNTING ON SHEET STEEL
- 5-TIGHTENING TORQUE 17.70 lb-in

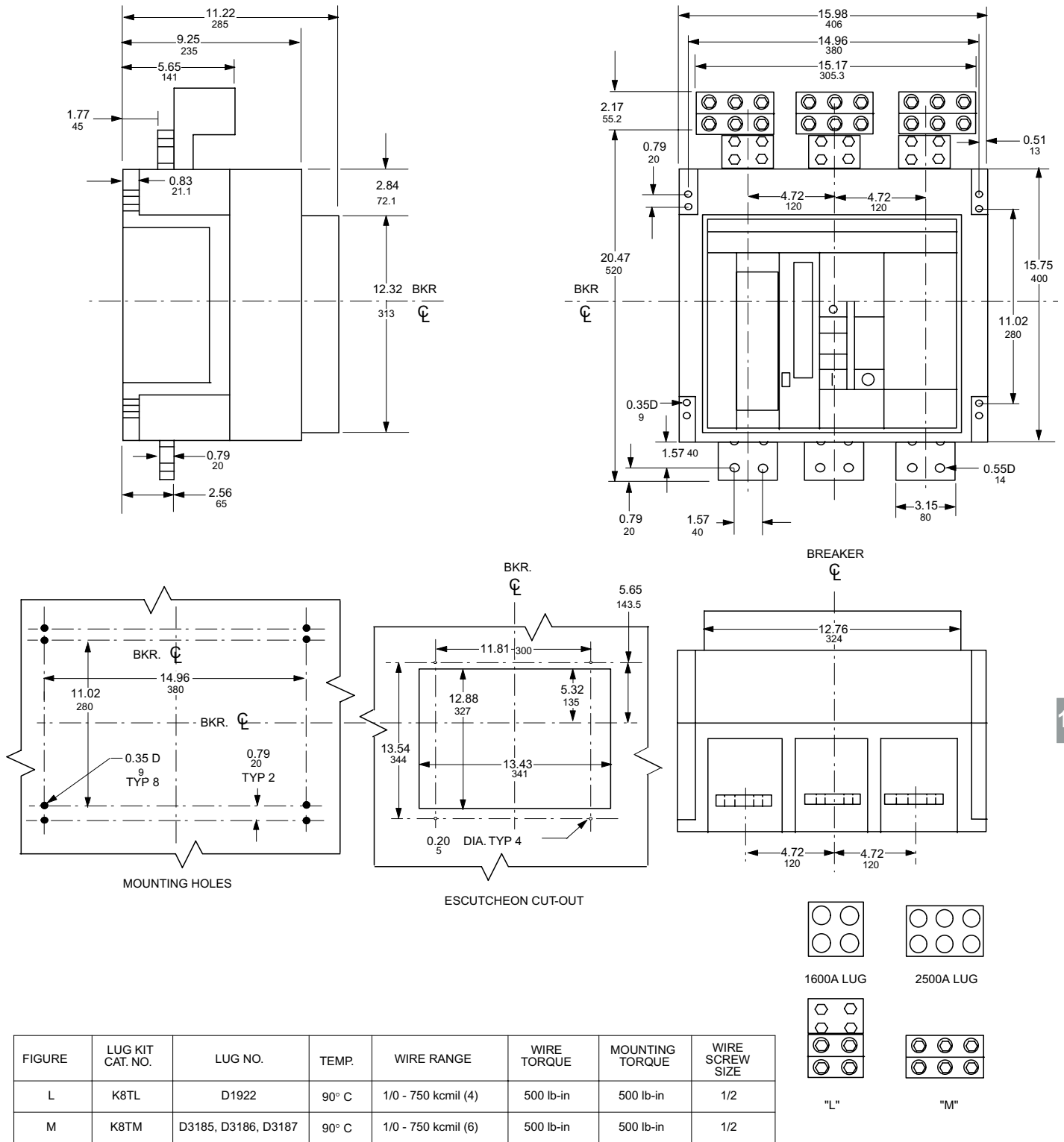


FIGURE	LUG KIT CAT. NO.	LUG NO.	TEMP.	WIRE RANGE	WIRE TORQUE	MOUNTING TORQUE	WIRE SCREW SIZE
K	K7TK, K7TK-2	D2959	90° C	4/0 - 500 kcmil (4)	375 lb-in	375 lb-in	3/8

Approximate dimensions S8, fixed version, front 1600A / 2000A / 2500A

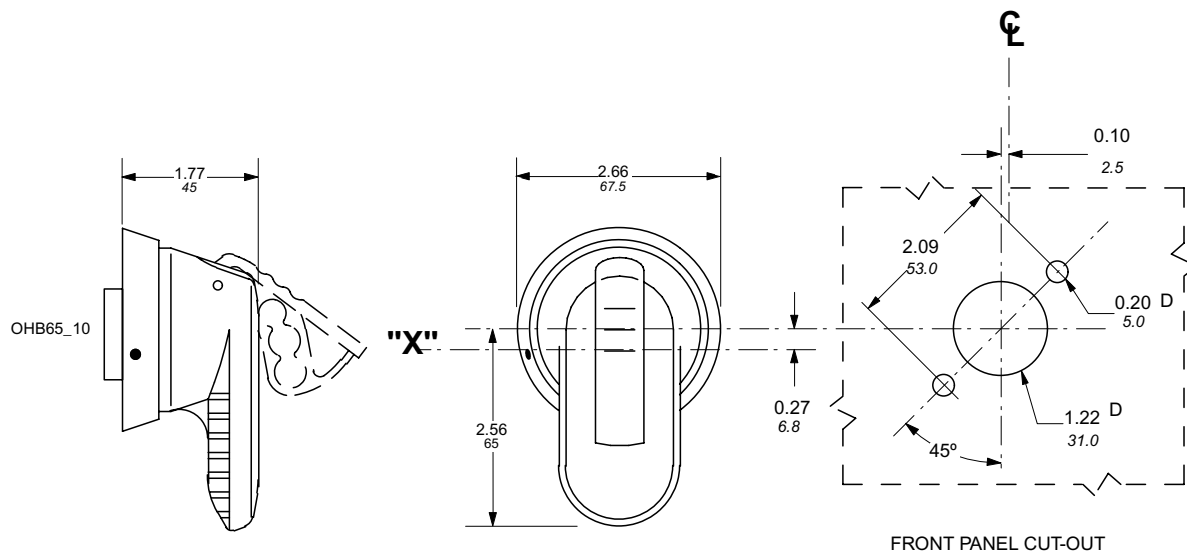
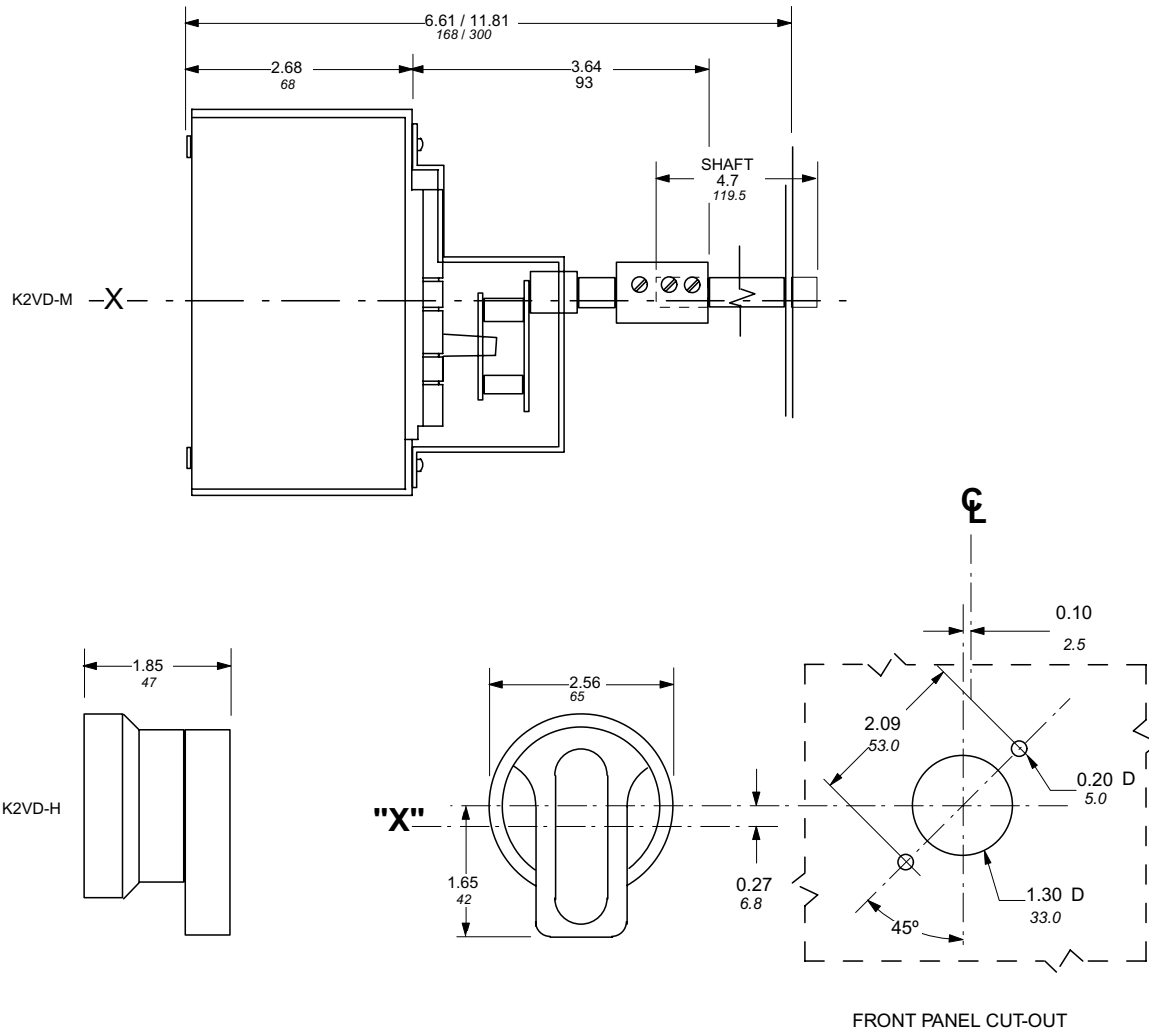
Isomax
MCCBs

00.00 Inches
00.00 [Millimeters]



Approximate dimensions Variable depth handle mechanism, S1

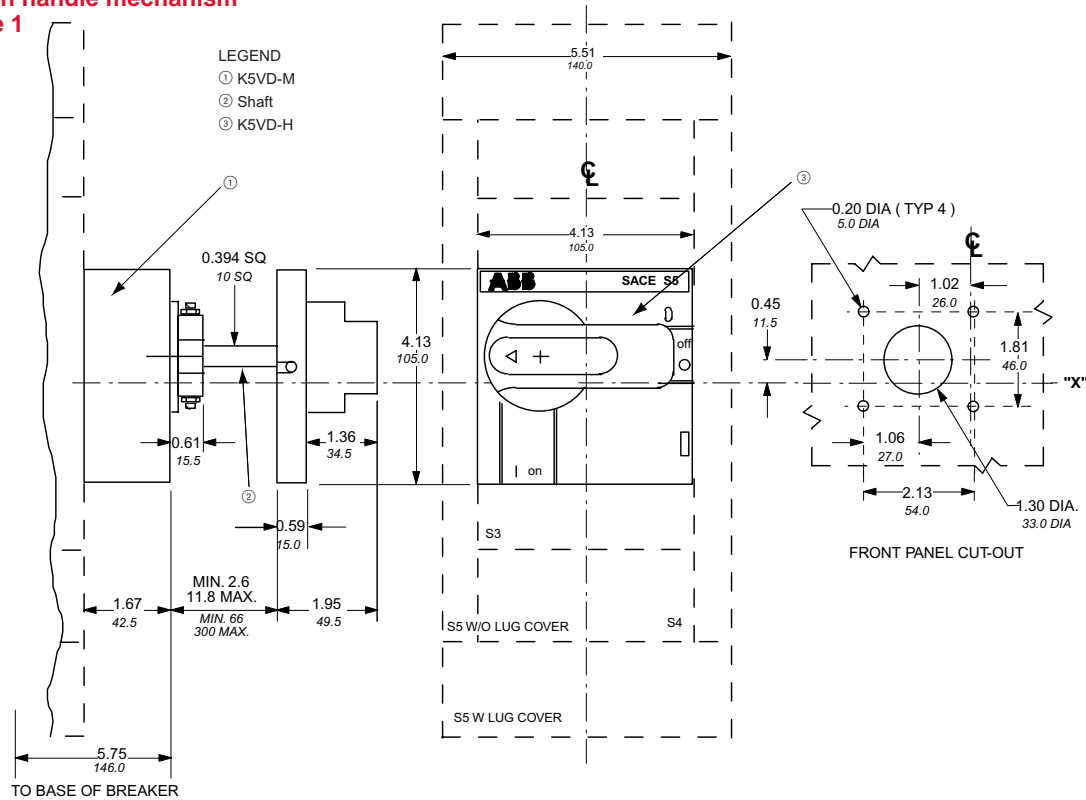
← 00.00 Inches
00.00 [Millimeters] →



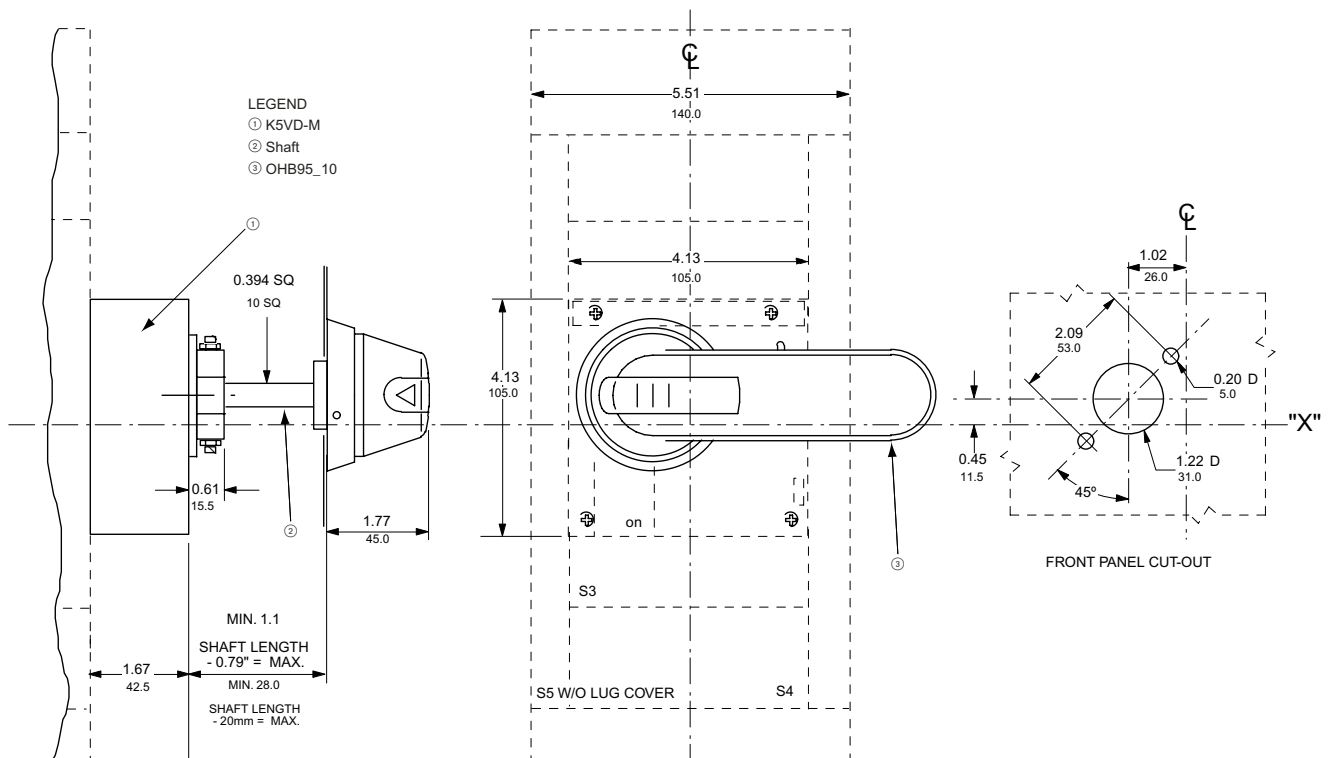
Approximate dimensions Variable depth handle mechanism, S3 – S5

00.00 Inches
00.00 [Millimeters]

Variable depth handle mechanism S3 – S5, Type 1



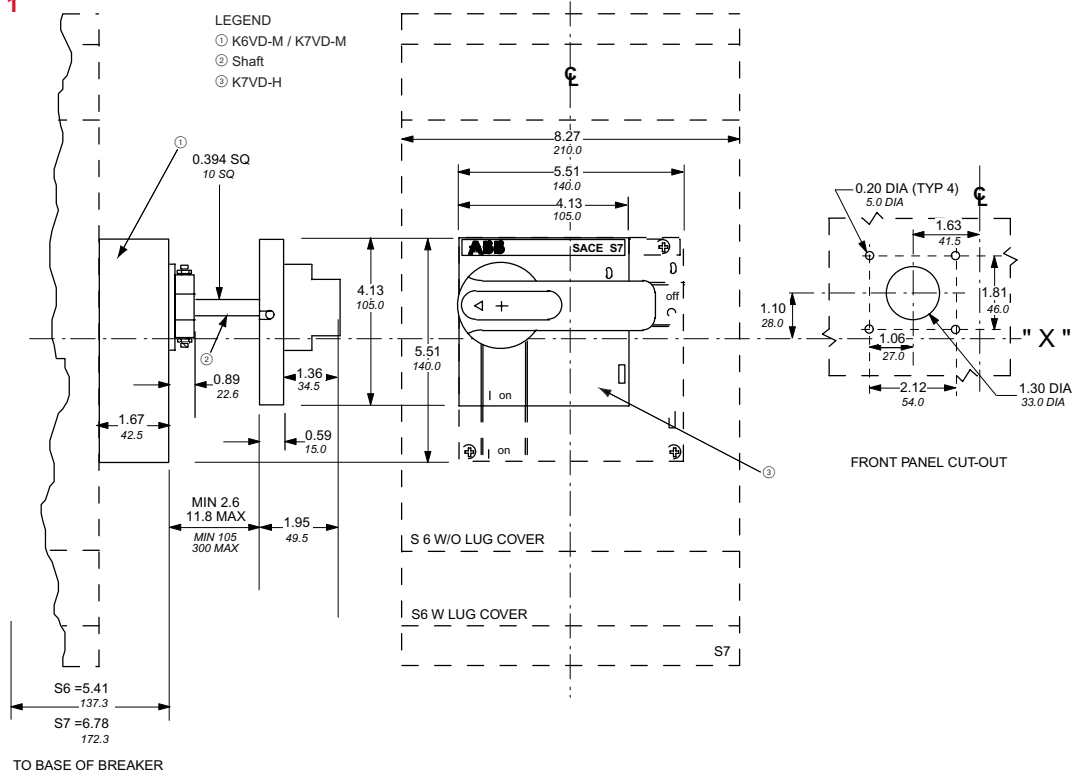
Variable depth handle mechanism S3 – S5, Type 1, 3R, 4, 4X & 12



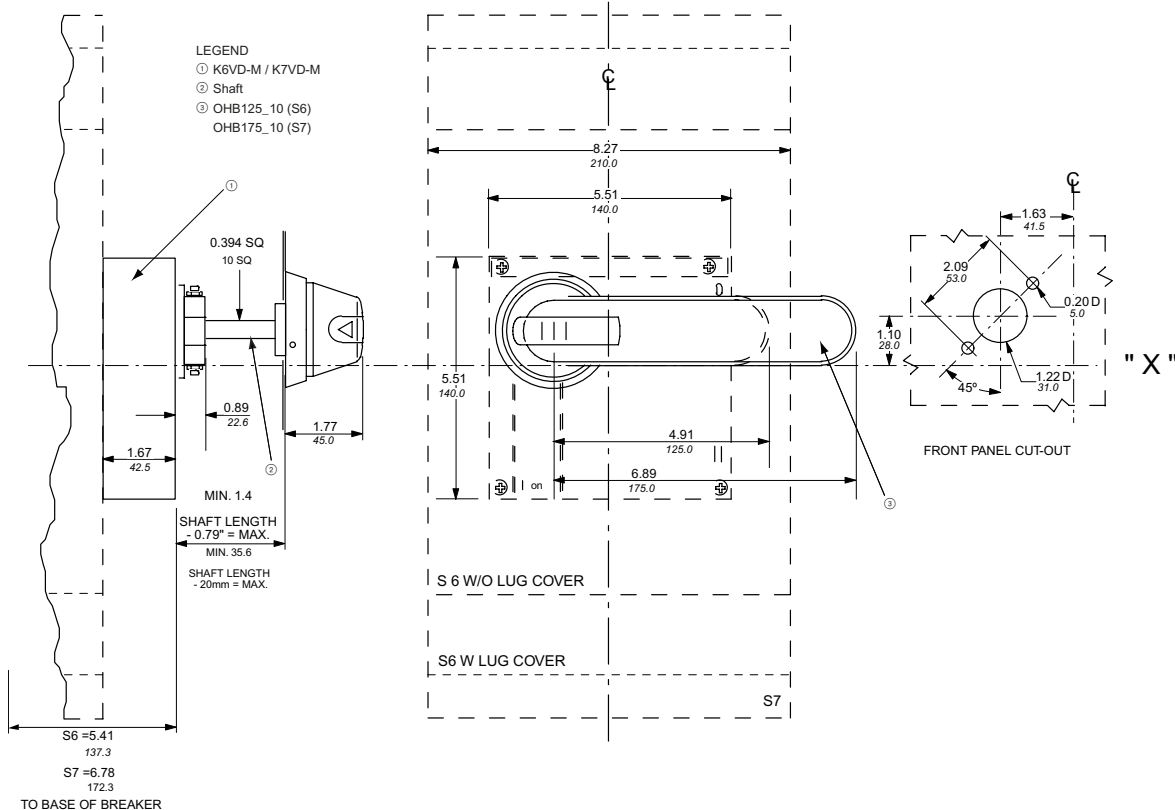
Approximate dimensions Variable depth handle mechanism, S6 – S7

00.00 Inches
00.00 [Millimeters]

Variable depth handle mechanism S6 – S7, Type 1



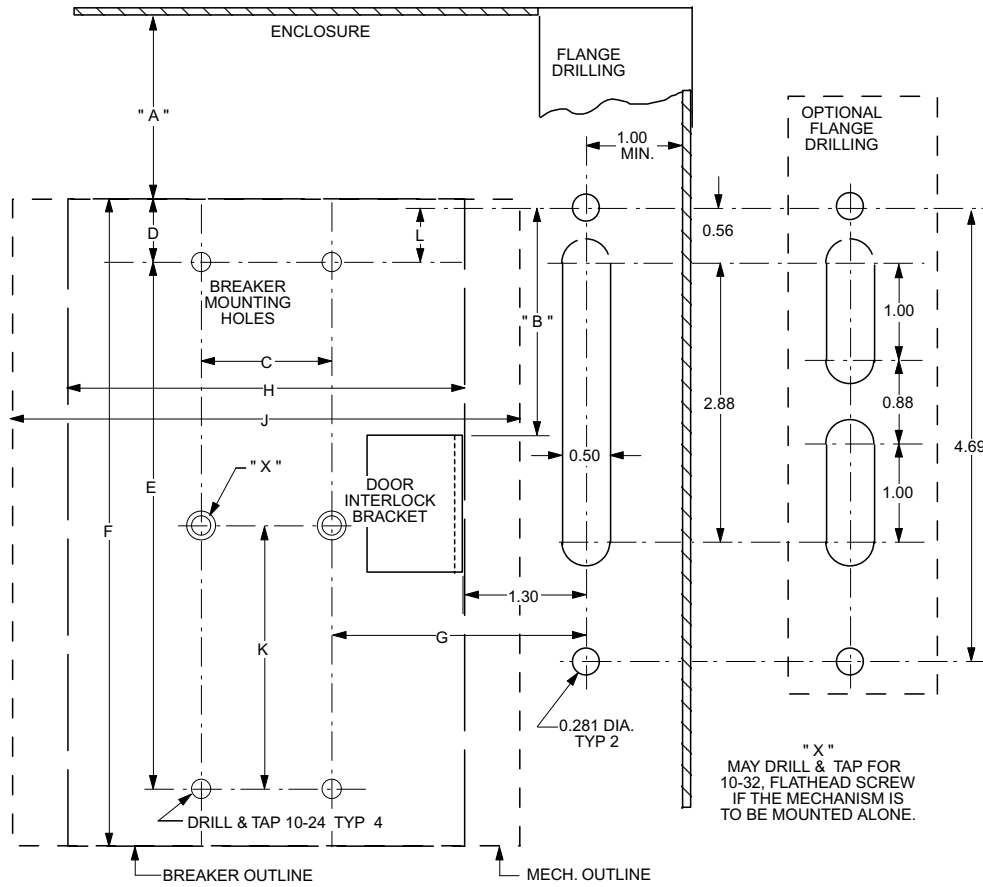
Variable depth handle mechanism S6 – S7, Type 1, 3R, 4, 4X & 12



Approximate dimensions S1 - S6 Flange handle, shaft operated

Isomax
MCCBs

00.00 Inches
00.00 [Millimeters]

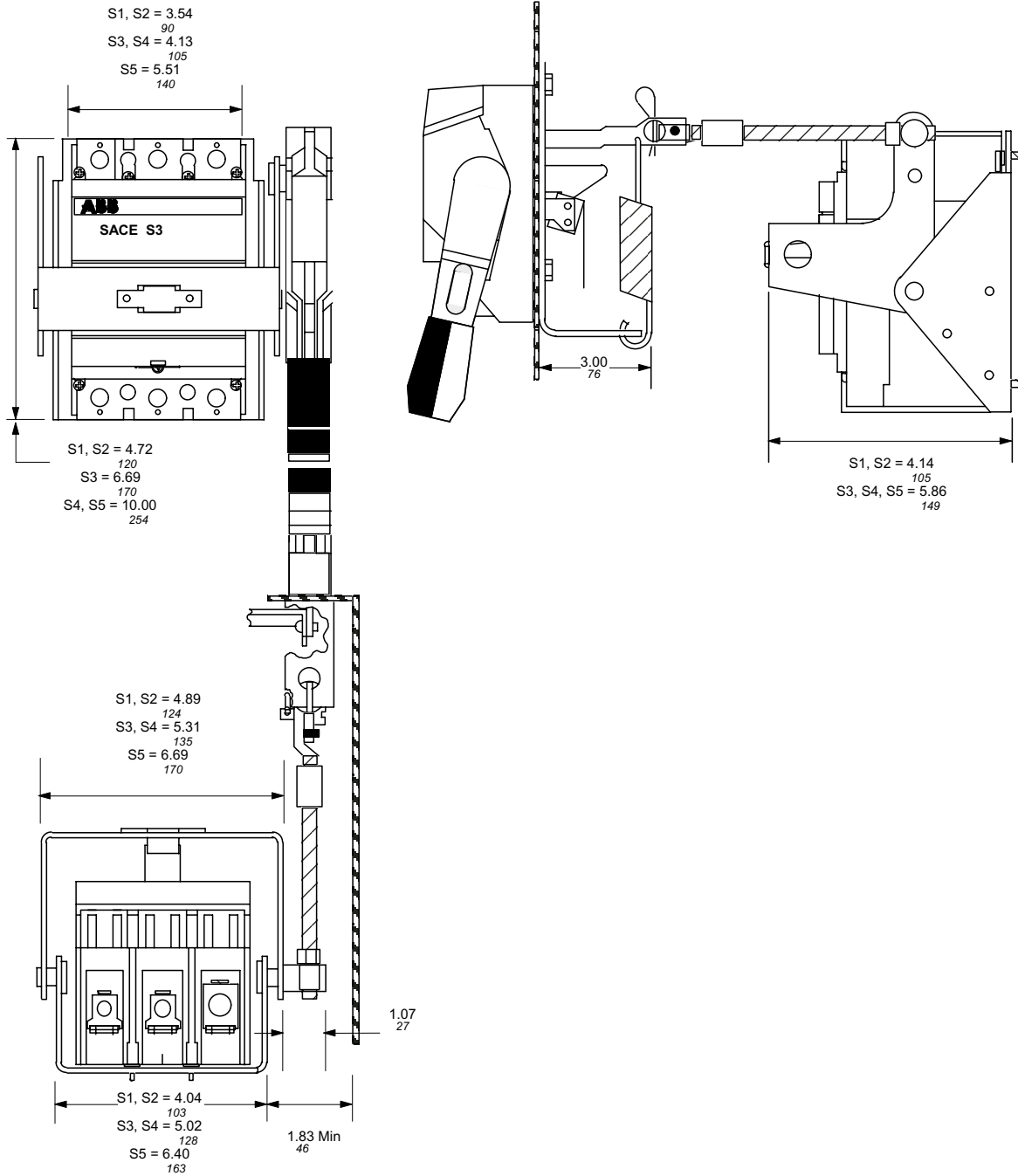


- NOTES:
 1. "A" DIM. IS THE WIRING BENDING SPACE AS REQUIRED BY THE NATIONAL ELECTRIC CODE.
 2. "B" DIM. IS 2.340 in. IF ENCLOSURE DOES NOT HAVE A SAFETY DOOR INTERLOCK, AND 1.500 in. IF IT DOES HAVE A SAFETY DOOR INTERLOCK.

FRAME	C	D	E	F	G	H	J	K	L
S1	0.98	0.39	3.94	4.72	2.53	3.07	4.89	1.97	-.97
S2	1.18	0.39	3.94	4.72	2.53	3.54	4.89	1.97	-.97
S3	1.38	0.62	5.47	6.69	2.64	4.13	5.31	2.73	-.59
S4	1.38	0.79	8.43	10.00	2.64	4.13	5.31	4.22	+.76
S5	1.72	0.79	8.43	10.00	3.16	5.51	6.69	4.22	+.76
S6	2.76	0.61	9.33	10.55	4.41	8.27	10.36	4.66	+1.61

Approximate dimensions Flange handle, shaft operated

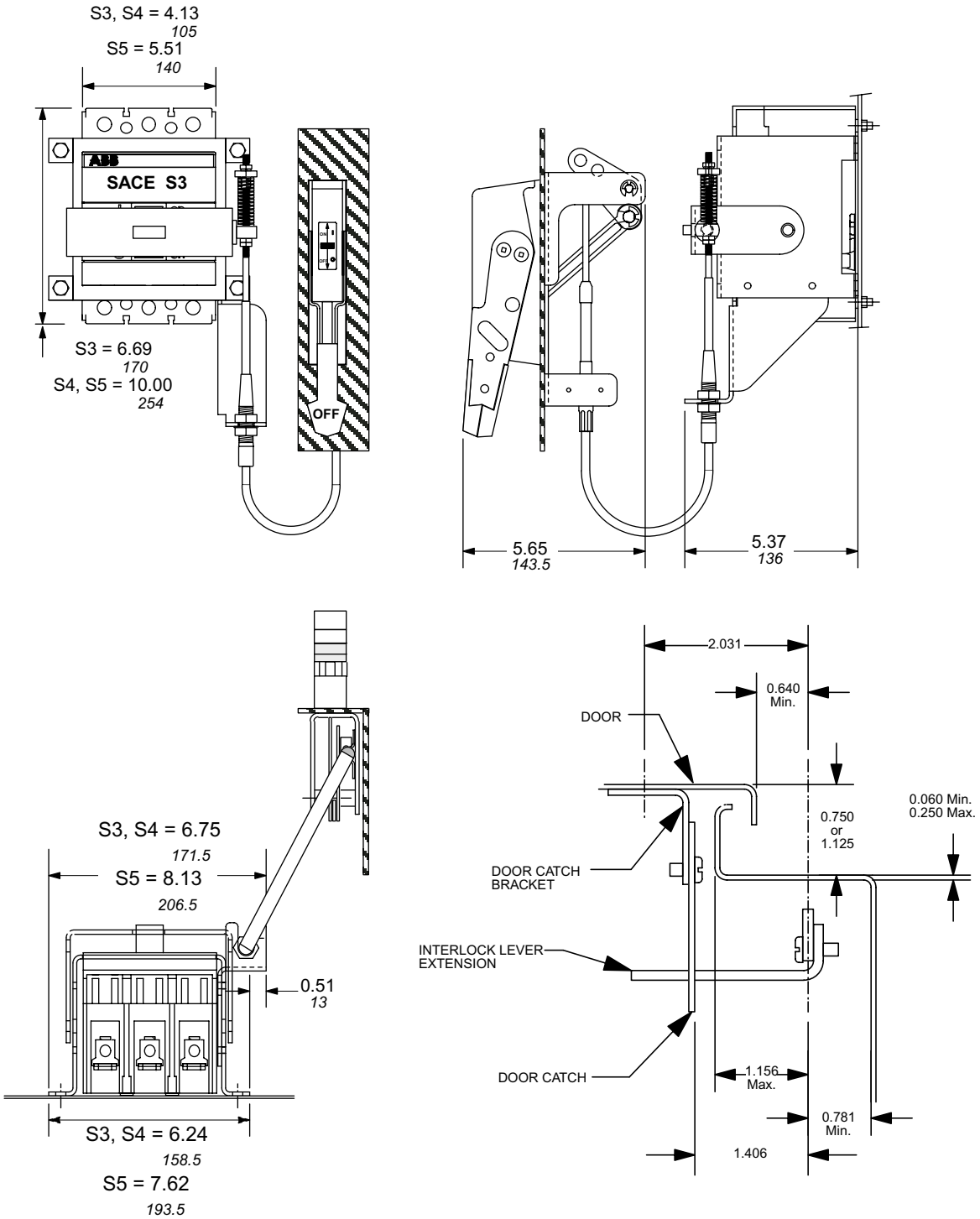
00.00 Inches
00.00 [Millimeters]



Approximate dimensions S1 – S5 Flange handle, cable operated

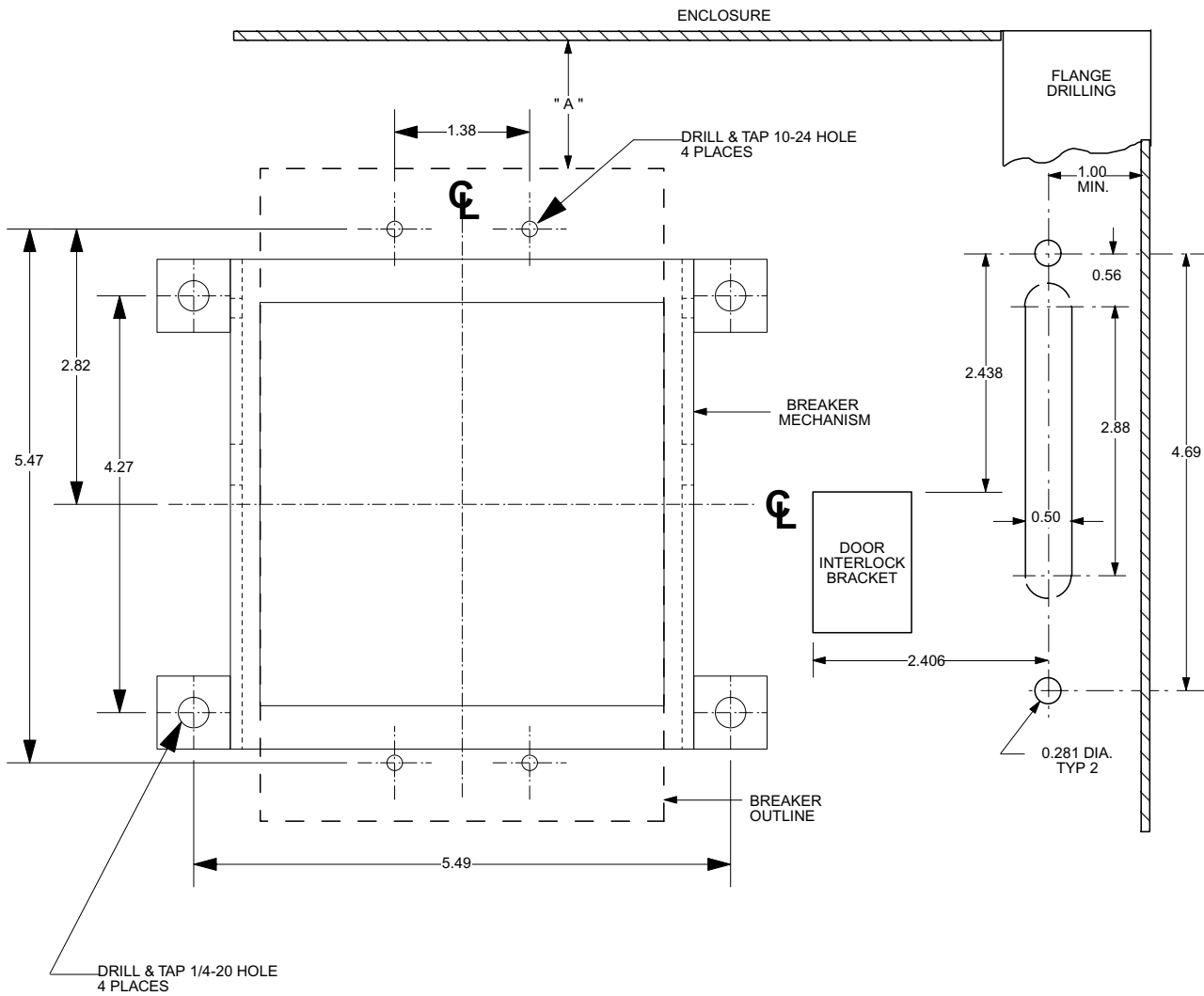
Isomax
MCCBs

00.00 Inches
00.00 [Millimeters]



Approximate dimensions Flange handle, cable operated, S3

00.00 Inches
00.00 [Millimeters]



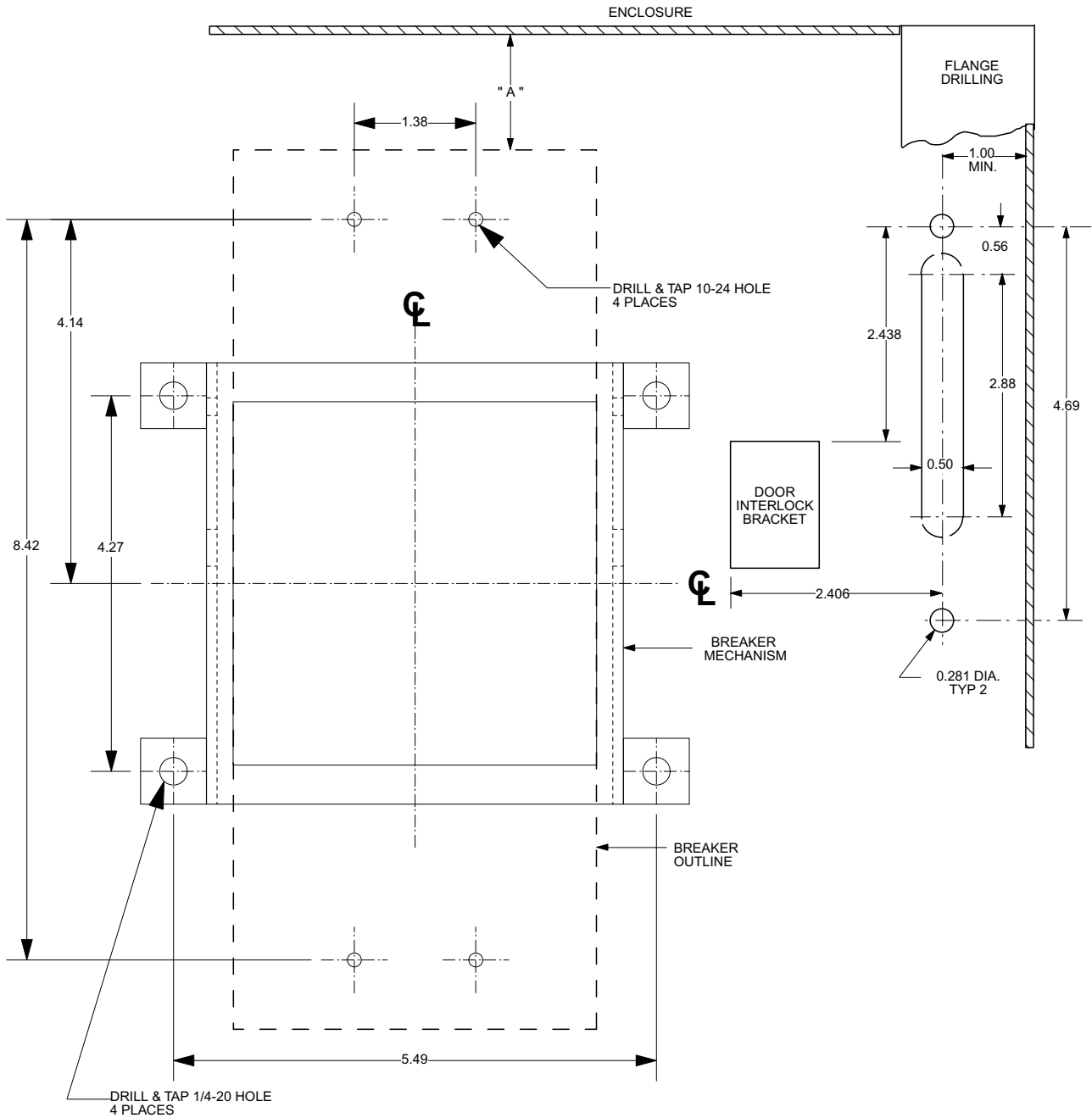
NOTES:

1. "A" DIM. IS THE WIRING BENDING SPACE AS REQUIRED BY THE NATIONAL ELECTRIC CODE.
2. THE MINIMUM BEND RADIUS OF THE CABLE IS 3 INCHES.

Approximate dimensions Flange handle, cable operated, S4

Isomax
MCCBs

00.00 Inches
00.00 [Millimeters]

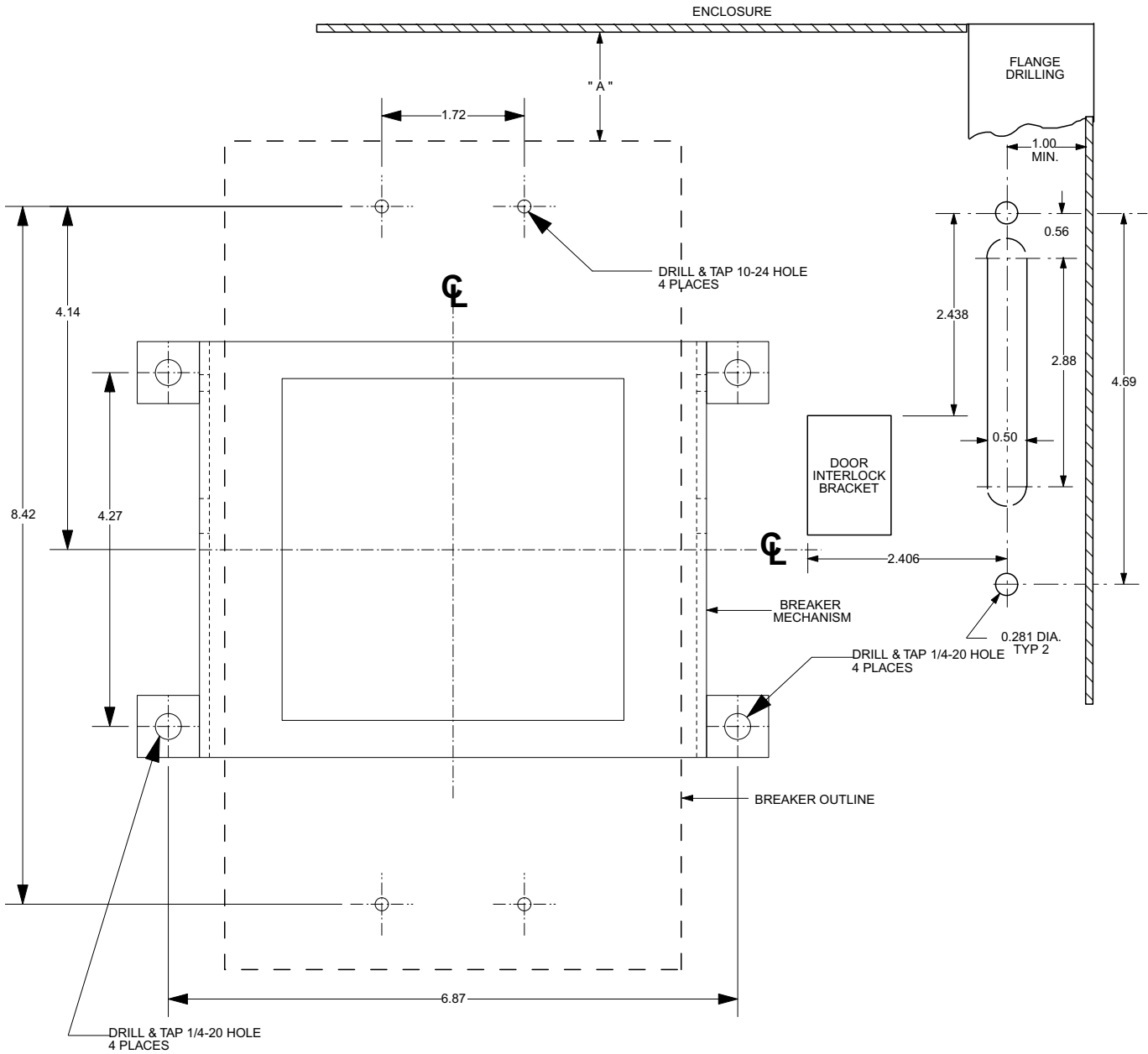


NOTES:

1. "A" DIM. IS THE WIRING BENDING SPACE AS REQUIRED BY THE NATIONAL ELECTRIC CODE.
2. THE MINIMUM BEND RADIUS OF THE CABLE IS 3 INCHES.

Approximate dimensions Flange handle, cable operated, S5

00.00 Inches
00.00 [Millimeters]



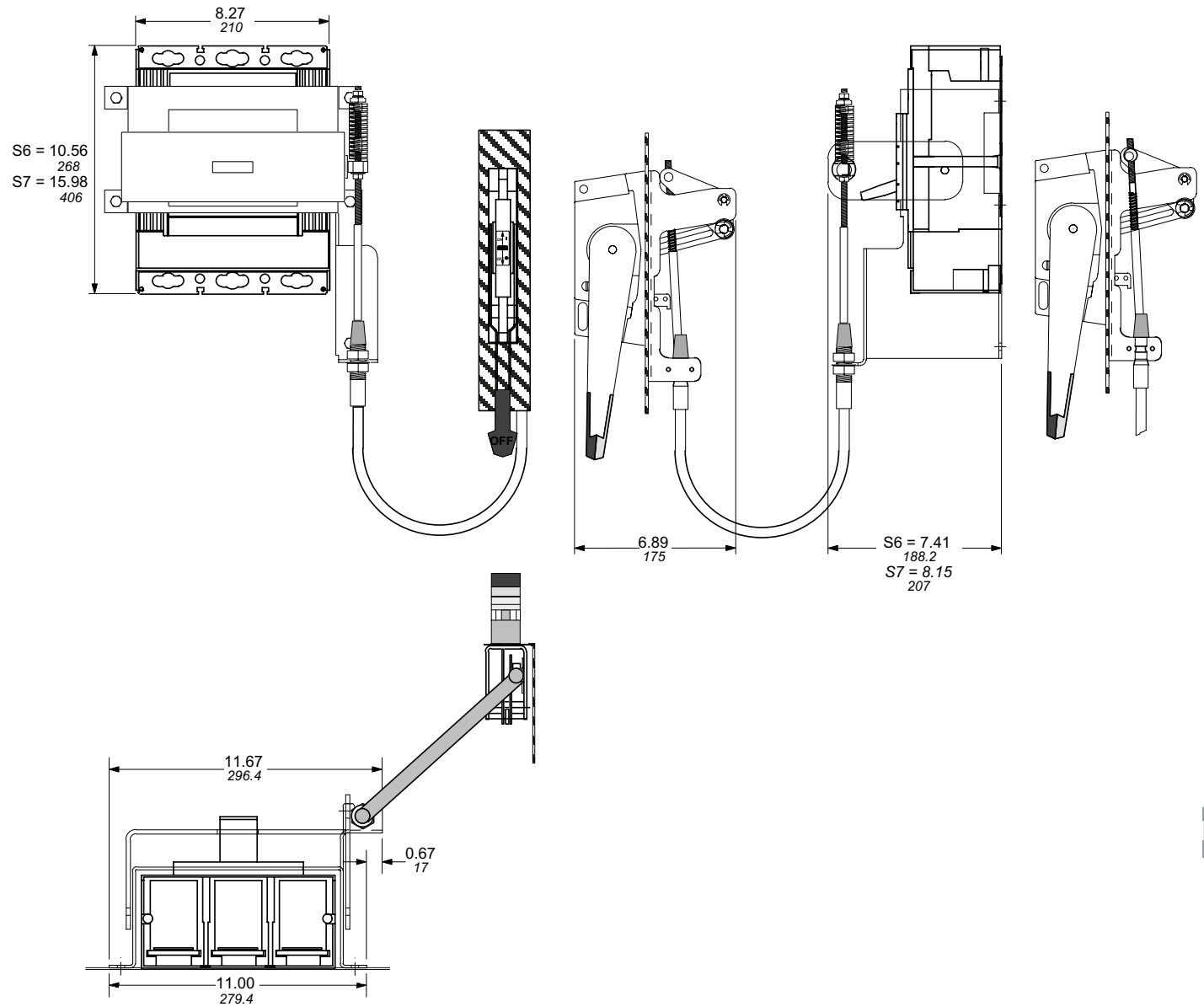
15

- NOTES:
1. "A" DIM. IS THE WIRING BENDING SPACE AS REQUIRED BY THE NATIONAL ELECTRIC CODE.
 2. THE MINIMUM BEND RADIUS OF THE CABLE IS 3 INCHES.

Approximate dimensions Flange handle, cable operated, S6 & S7

Isomax
MCCBs

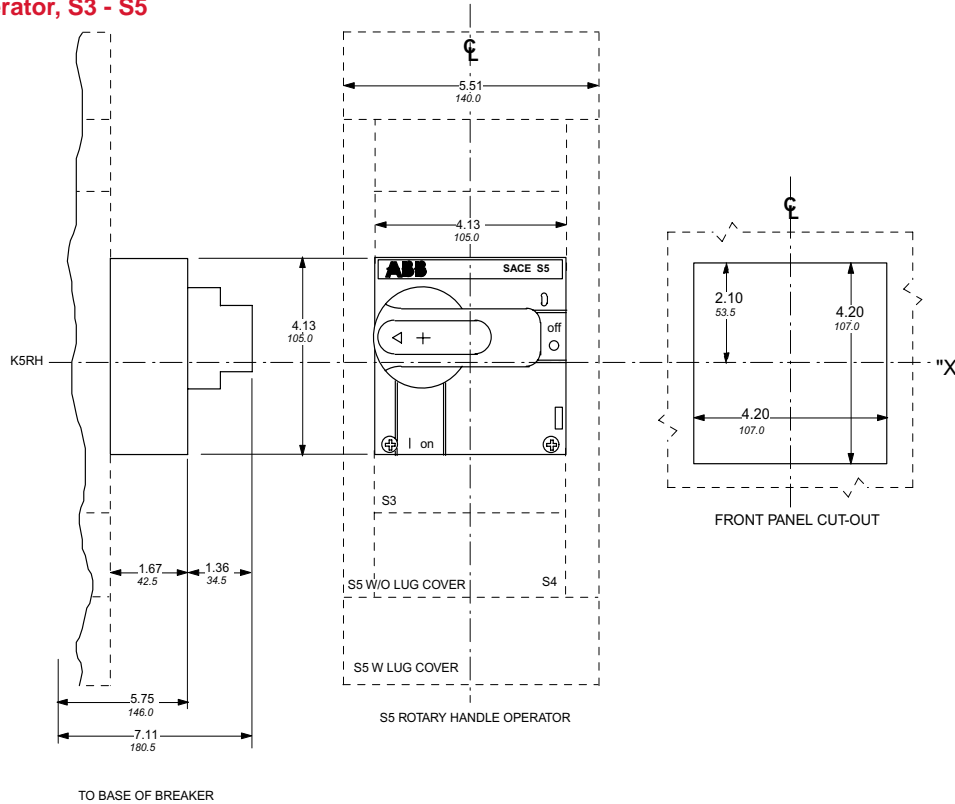
00.00 Inches
00.00 [Millimeters]



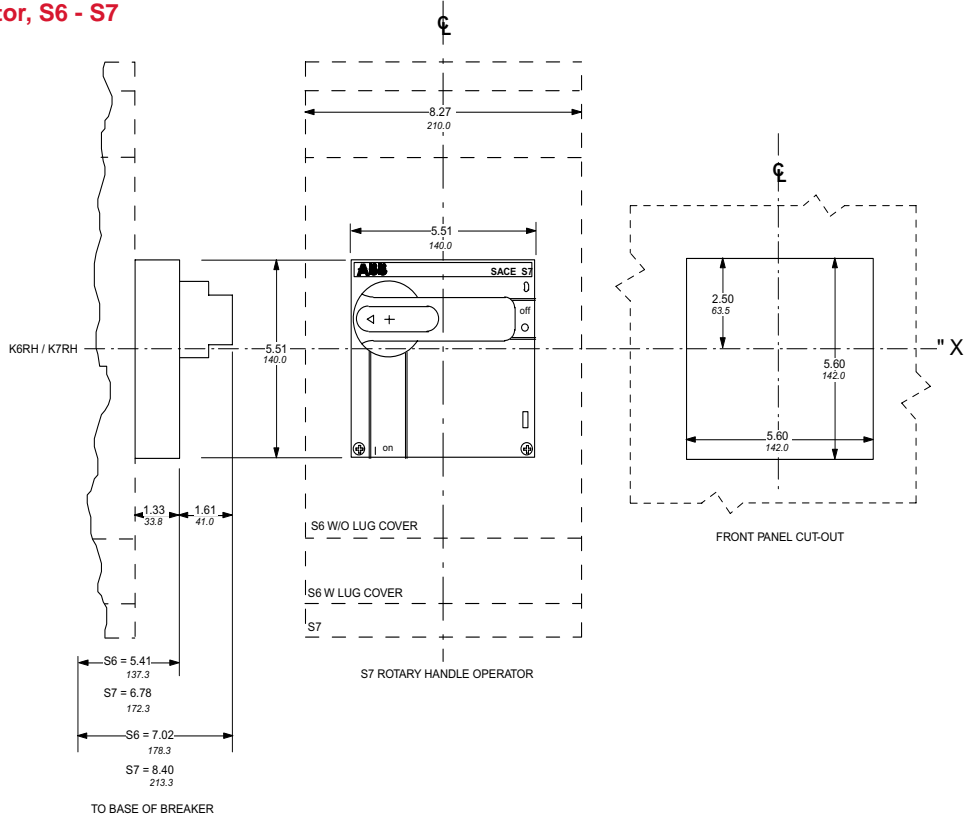
Approximate dimensions Rotary handle operator, S3 - S7

00.00 Inches
00.00 [Millimeters]

Rotary handle operator, S3 - S5



Rotary handle operator, S6 - S7

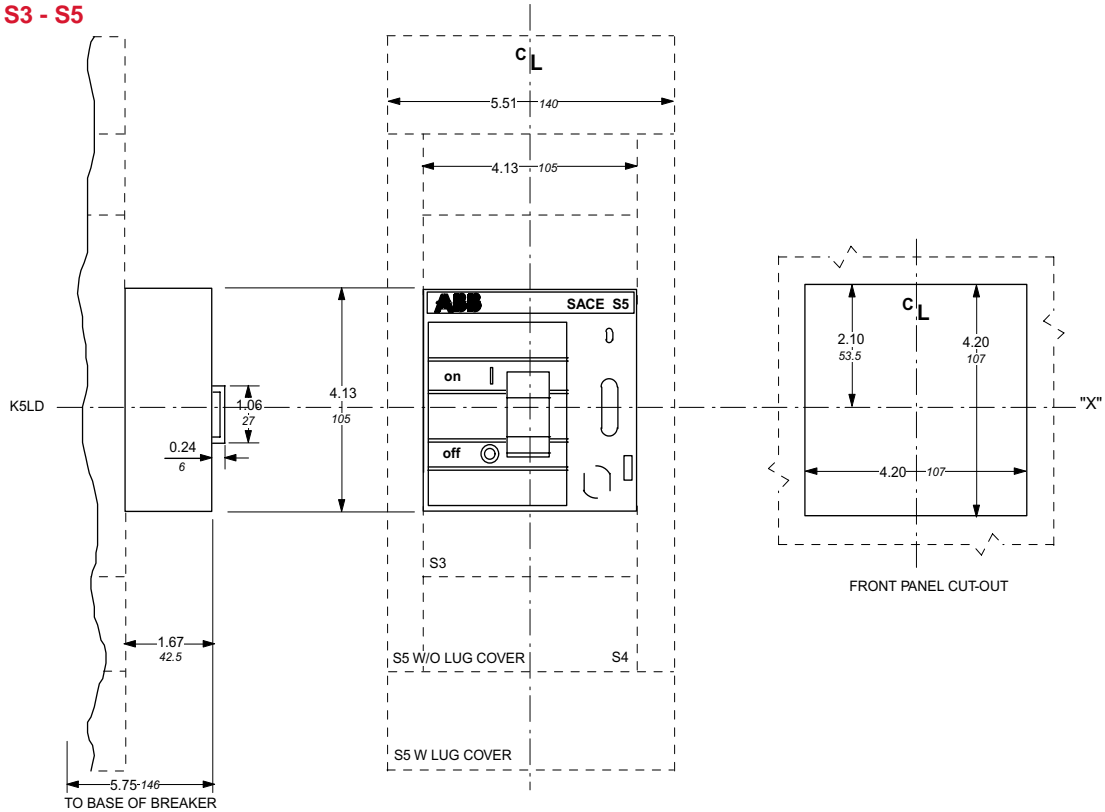


Approximate dimensions Locking devices, S3 - S7

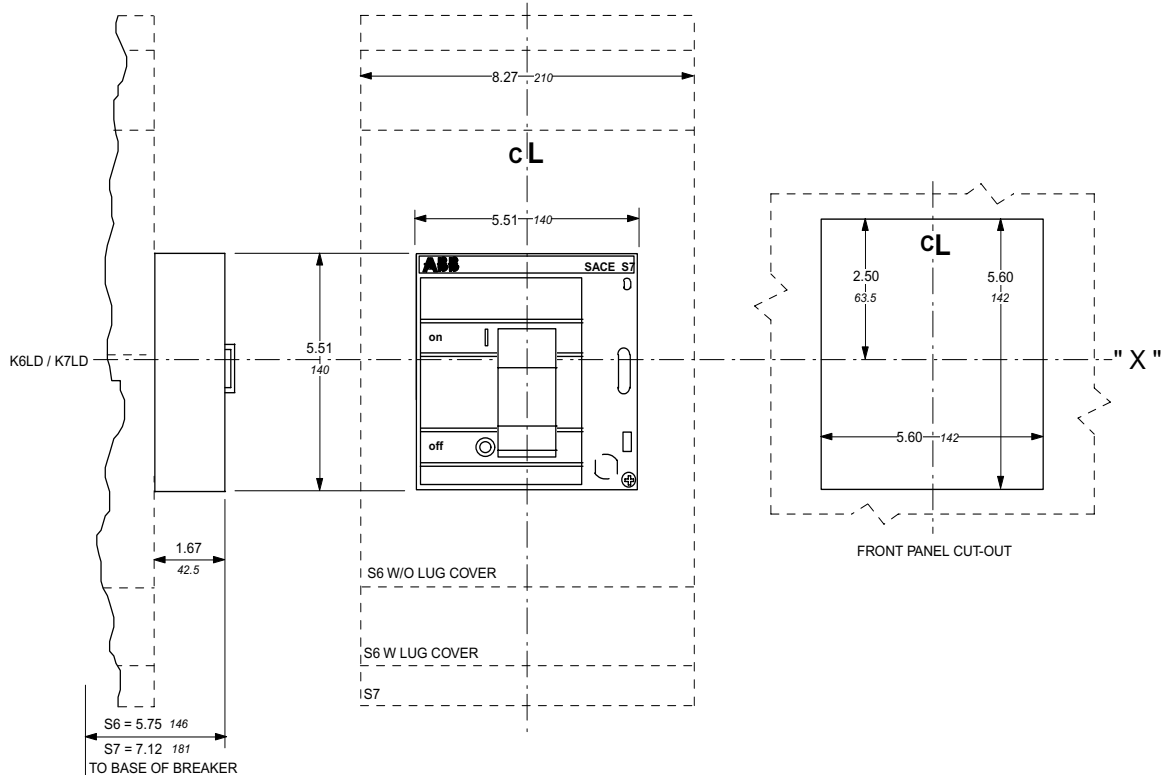
Isomax
MCCBs

00.00 Inches
00.00 [Millimeters]

Locking device, S3 - S5



Locking device, S6 - S7

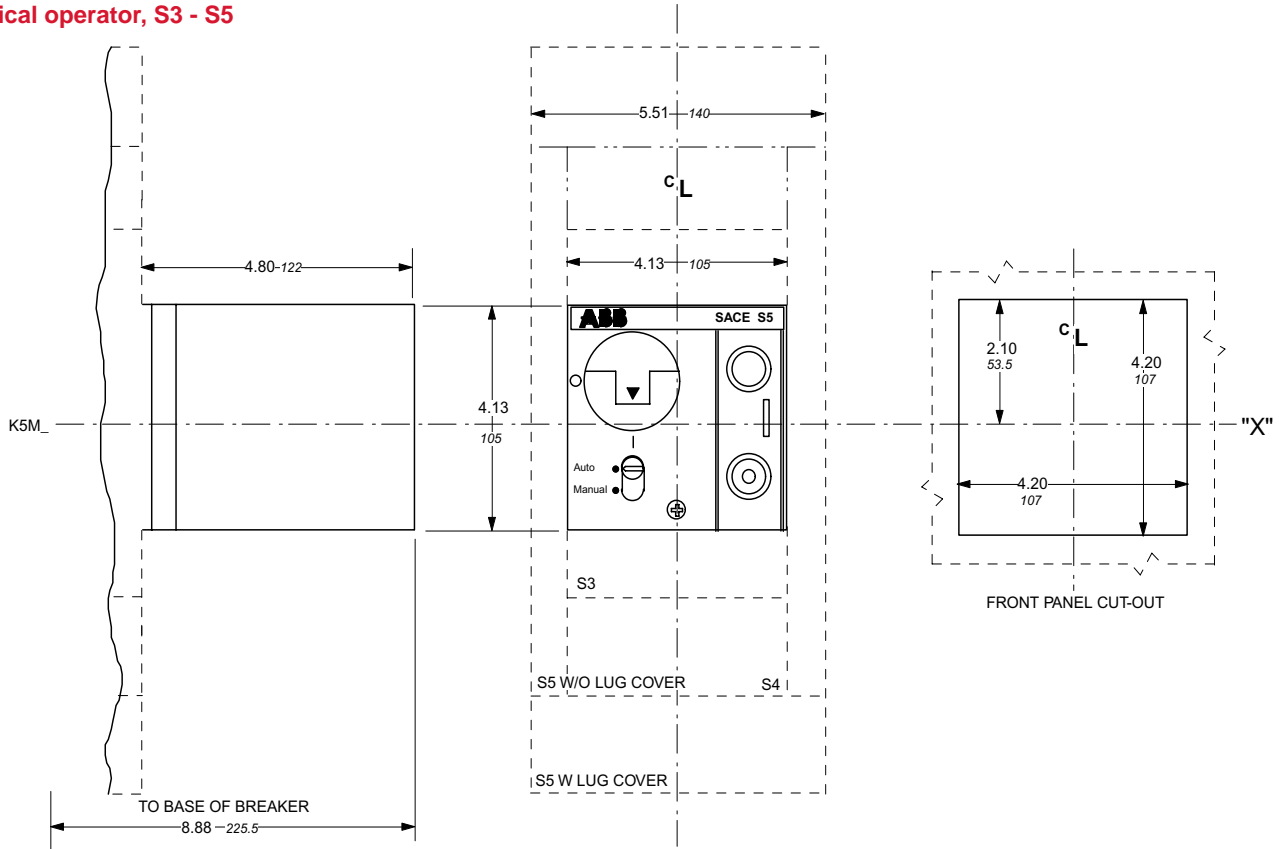




Approximate dimensions Electrical operators, S3 - S7

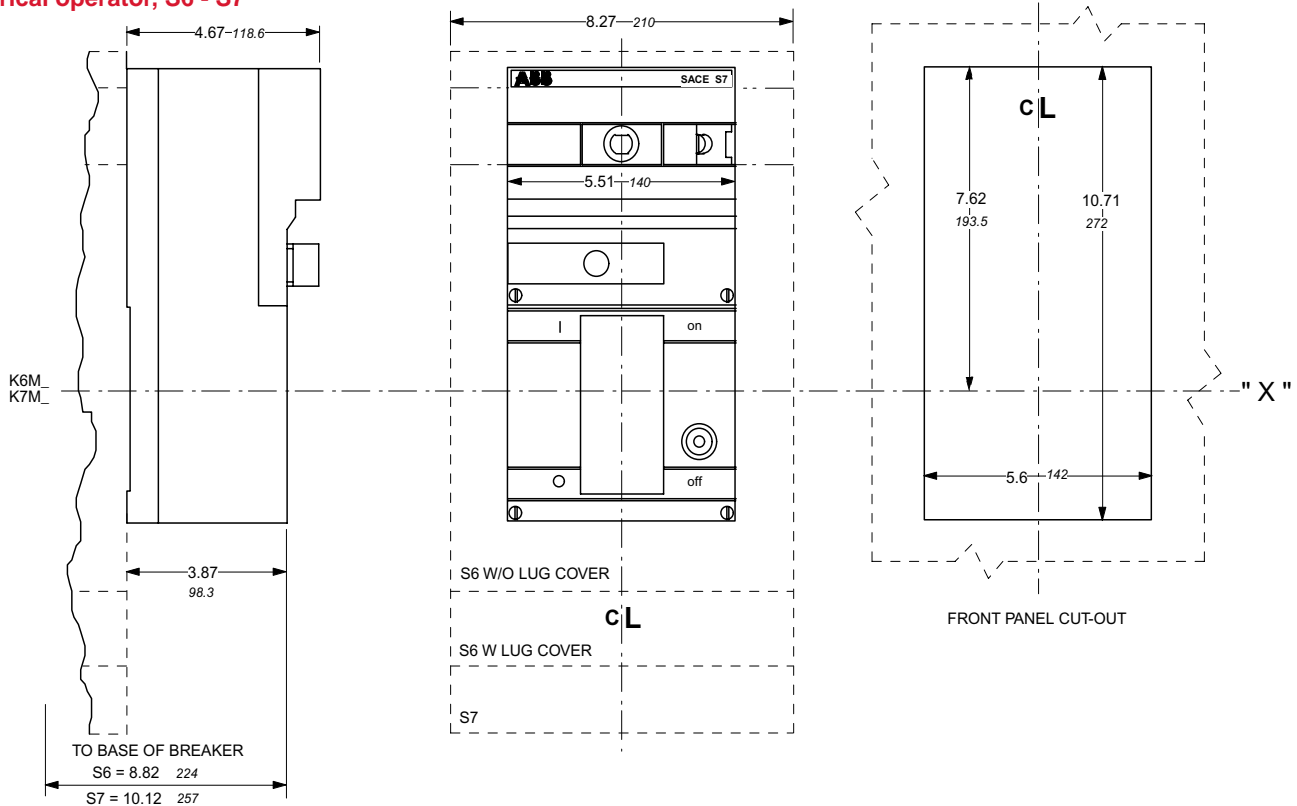
00.00 Inches
00.00 [Millimeters]

Electrical operator, S3 - S5



Electrical operator, S6 - S7

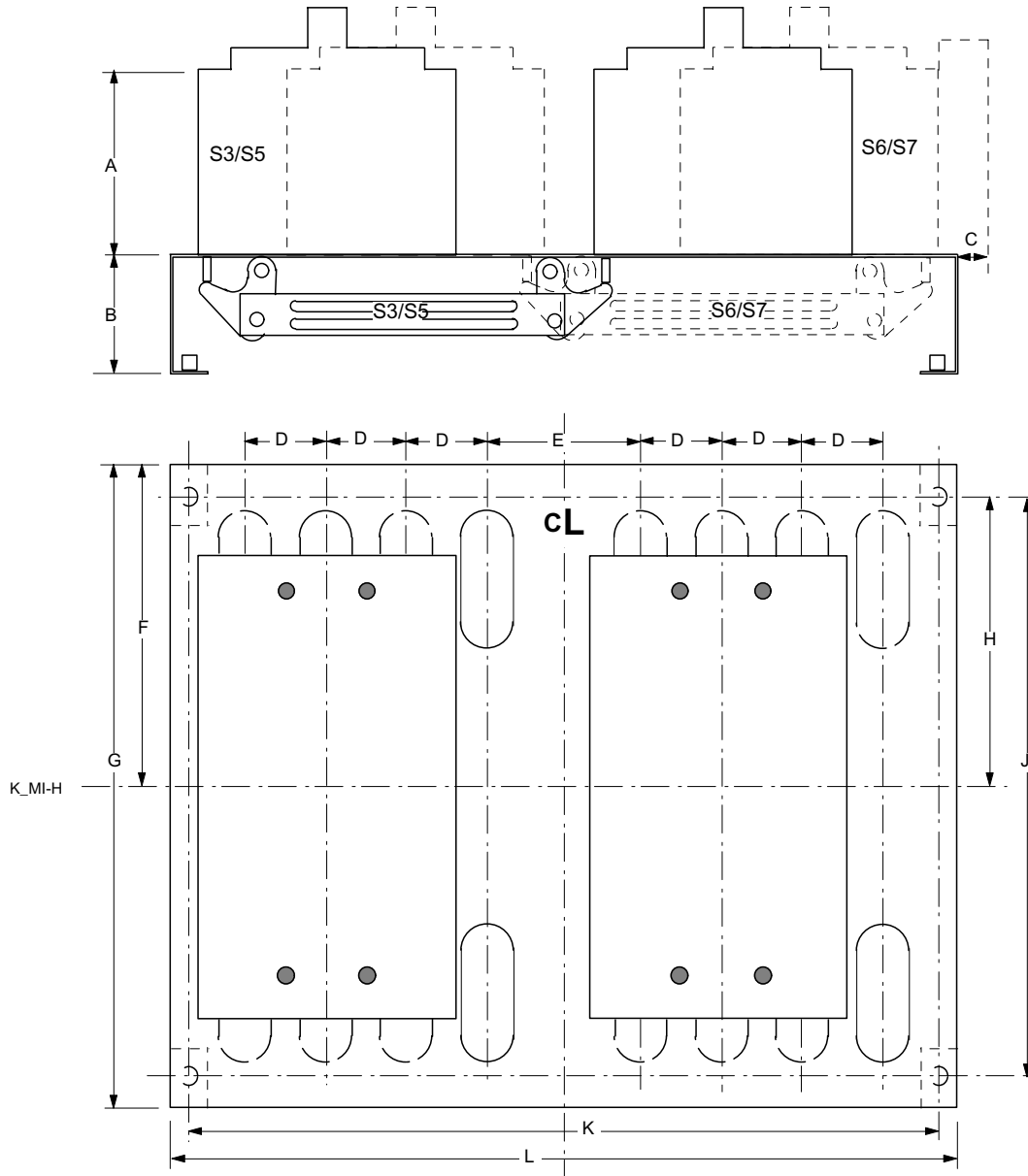
15



Approximate dimensions Mechanically interlocked, horizontal, S3 – S7

Isomax
MCCBs

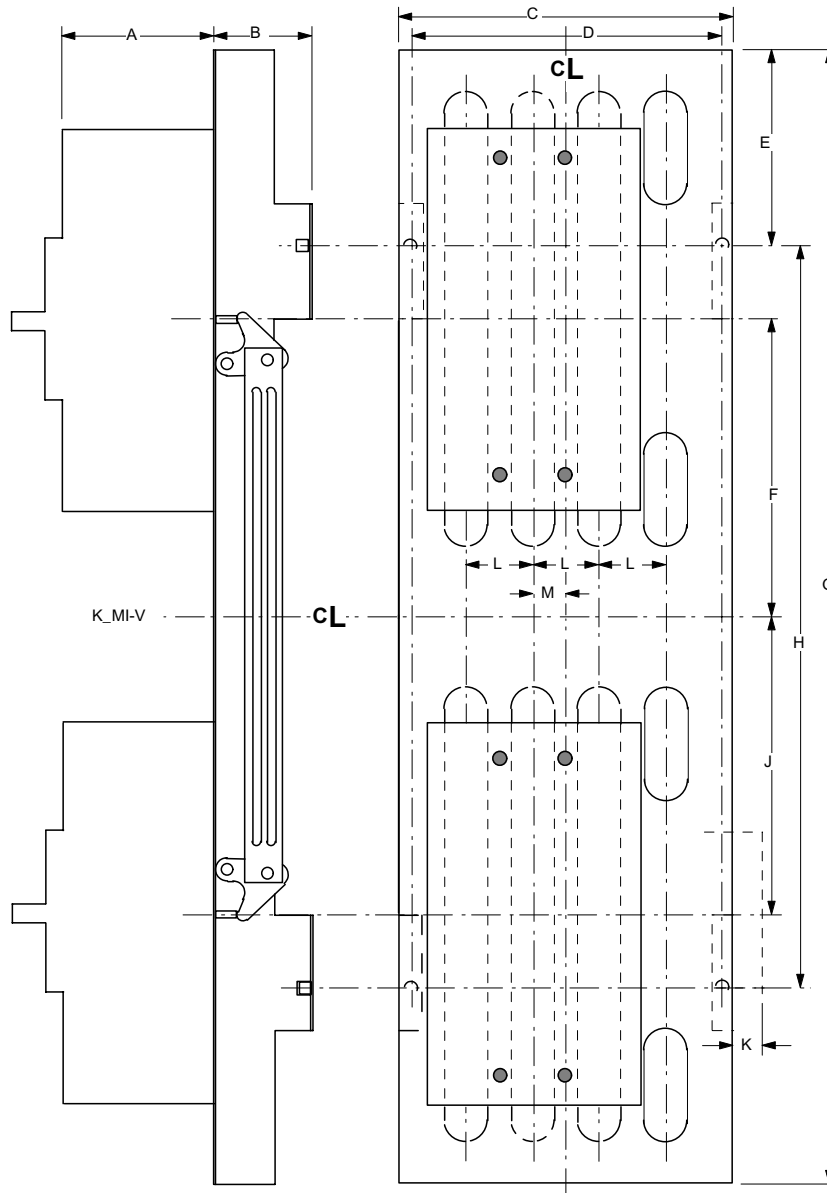
00.00 Inches
00.00 [Millimeters]



FRAME	A	B	C	D	E	F	G	H	J	K	L
S3	4.08 103.5	2.56 65	0.47 12	1.38 35	2.60 66	5.31 135	10.43 265	4.57 116	8.96 227.5	12.76 324	13.78 350
S4	4.08 103.5	2.56 65	0.47 12	1.38 35	2.60 66	6.83 173.5	13.78 350	6.14 156	12.40 315	12.76 324	13.78 350
S5	4.08 103.5	2.56 65	0.63 16	1.72 35	3.29 83.5	6.83 173.5	13.78 350	6.14 156	12.40 315	15.85 402.5	16.93 430
S6	4.07 103.5	2.56 65	0.41 10.5	2.76 70	4.72 120	7.38 187.5	14.76 375	6.89 175	13.78 350	20.67 525	25.60 650
S7	5.53 140.5	2.56 65	0.22 5.5	2.76 70	4.72 120	8.86 225	17.72 450	8.27 210	16.54 420	21.65 550	25.98 660

Approximate dimensions Mechanically interlocked, vertical, S3 – S7

00.00 Inches
00.00 [Millimeters]



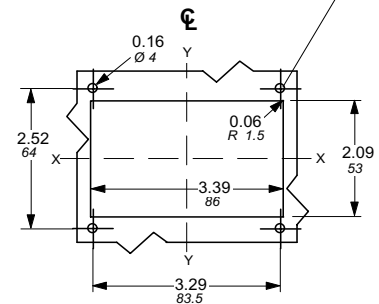
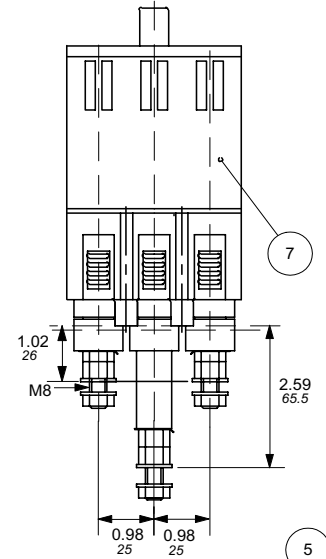
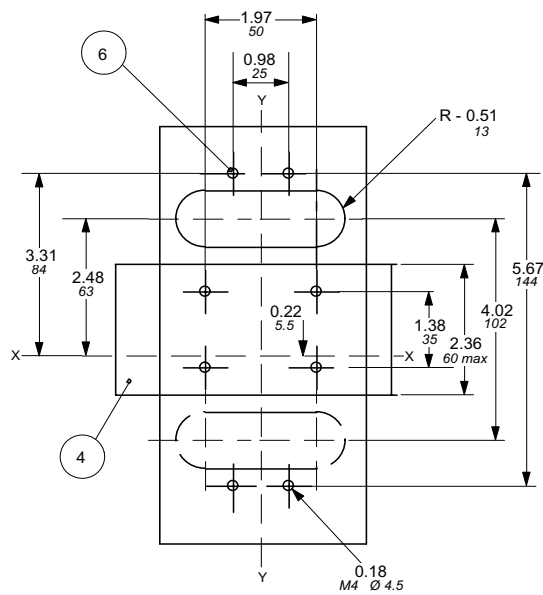
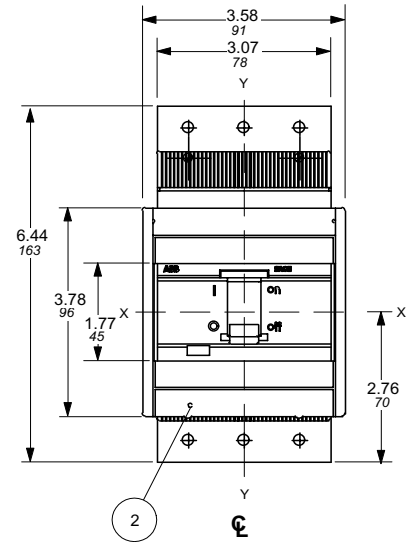
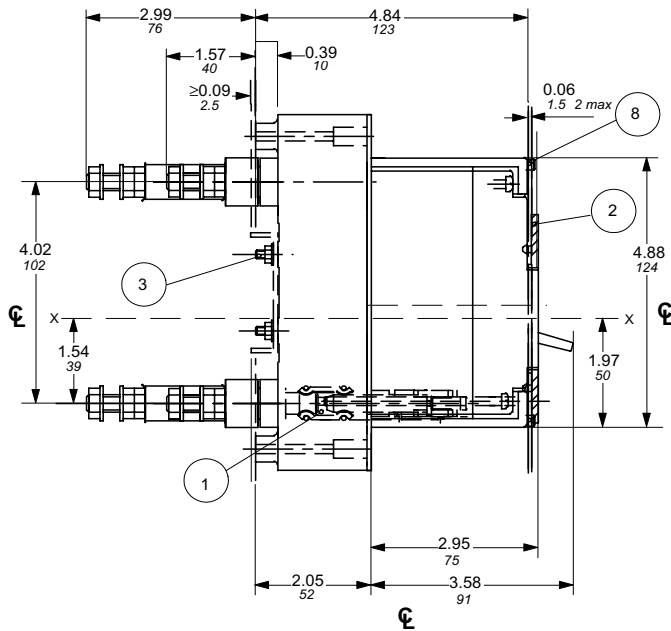
15

FRAME	A	B	C	D	E	F	G	H	J	K	L	M
S3	4.07	2.56	7.08	6.20	4.49	6.00	22.76	13.78	6.20	0.45	1.38	0.69
	103.5	65	180	157.5	114	152.5	578	350	157.5	11.5	35	17.5
S4	4.07	2.56	7.08	6.20	5.12	7.81	29.53	19.29	7.70	0.45	1.38	0.69
	103.5	65	180	157.5	130	198.5	750	490	195.5	11.5	35	17.5
S5	4.07	2.56	8.67	7.91	5.12	7.81	29.53	19.29	7.70	0.45	1.72	0.94
	103.5	65	180	201	130	198.5	750	490	195.5	11.5	43.75	23.75
S6	4.07	2.56	12.20	11.02	5.81	8.82	32.28	20.67	8.82	0.67	2.76	1.44
	103.5	65	310	280	147.5	224	820	525	224	17	70	36.5
S7	5.53	2.56	13.39	12.40	5.12	11.26	43.31	34.45	11.26	0.0	2.76	1.38
	140.5	65	340	315	14.43	286	1100	875	286	0	70	35

Approximate dimensions S1 Plug-in rear

Isomax
MCCBs

00.00 Inches
00.00 [Millimeters]



LEGEND

- 1-PLUG IN BASE
- 2-FLANGE FOR THE COMPARTMENT DOOR
- 3-MOUNTING SCREWS FOR PLUG IN BASE ON PLATE
- 4-MOUNTING HOLES FOR PLUG IN BASE ON CHANNEL
- 5-MOUNTING HOLES FOR FRONT FLANGE
- 6-MOUNTING HOLES FOR SHEET STEEL MOUNTING
- 7-TERMINAL COVERS (SEPERATE ITEM)
- 8-SEALING SCREWS (OPTIONAL)